

Part II. List of Other Arthropod Pheromones and Allomones

Update: March 23, 2024

(C) Other Compounds

These semiochemicals are divided into the following four groups and listed in ascending order of carbon chain length or ring size.

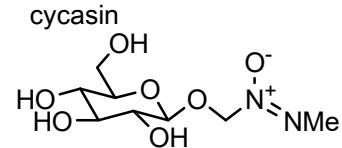
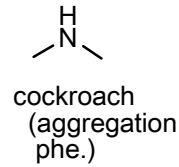
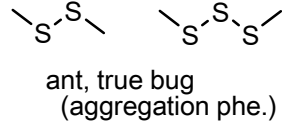
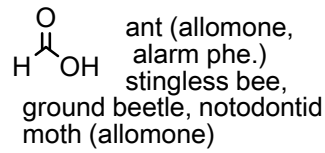
[C-1]	Other: Acyclic compounds	i – xxii	(478 compounds)
[C-2]	Other: True alkaloids	i – xi	(215 compounds)
[C-3]	Other: Aromatic compounds	i – vii	(150 compounds)
[C-4]	Other: Ring compounds	i – v	(99 compounds)

See the database, <https://lepipheromone.sakura.ne.jp/mepdb.html>, for more information, such as the IUPAC names, arthropod species names, and research publications

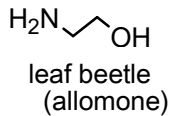
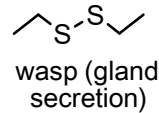
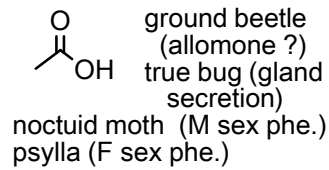
Lepidopteran female sex pheromones and male attractants are listed in **Part I**. Other arthropod pheromones and allomones are listed in **Part II**, which is composed of **(A)** terpenoid compounds, **(B)** non-terpene methyl-branched compounds, and **(C)** other compounds.

[C-1] Other: Acyclic comp. (i)

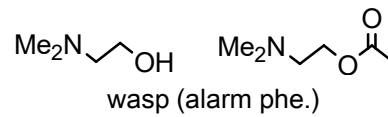
C1 chain



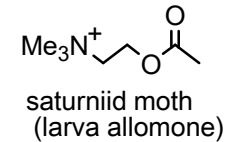
C2 chain



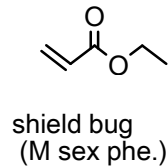
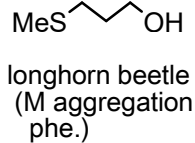
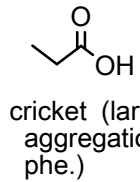
deanol



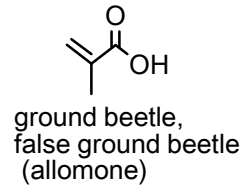
acetylcholine



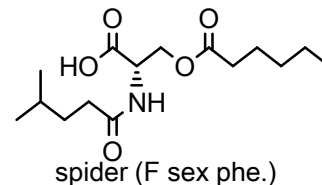
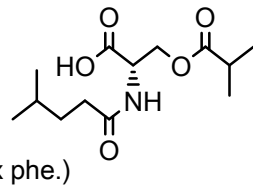
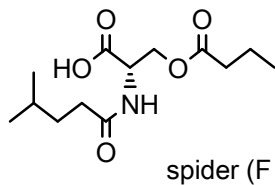
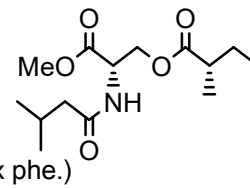
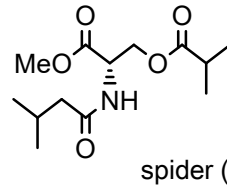
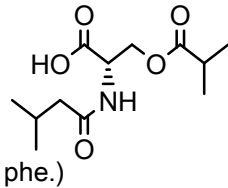
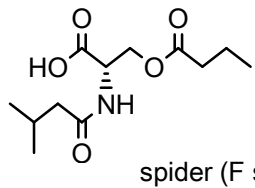
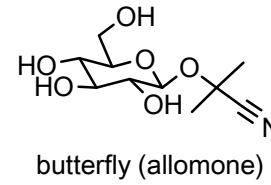
C3 chain



methacrylic acid

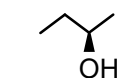


linamarin



[C-1] Other: Acyclic comp. (ii)

C4 chain

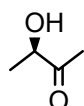


scarab beetle
(F sex phe.,
M aggregation phe.)
butterfly (larva allomone)

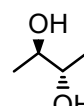
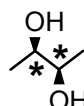


scarab beetle
(M aggregation
phe.)

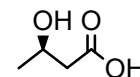
acetoin



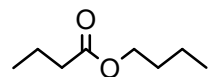
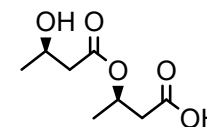
scarab beetle (F sex phe.)
cockroach (M sex phe.)
butterfly (M sex phe. ?)



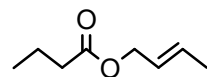
scarab beetle
(F gland secretion)



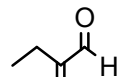
spider (F sex phe.)



leaf bug (F sex phe.,
gland secretion)
termite (primer phe.)

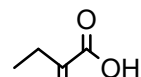


leaf bug (F. sex phe.)

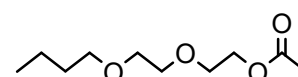


cockroach
(allomone)

ethacrylic acid

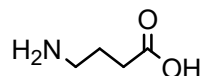


false ground beetle
(allomone ?)



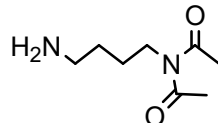
true bug (aggregation phe.)

GABA

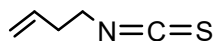


saturniid moth,
tussock moth
(larva allomone)

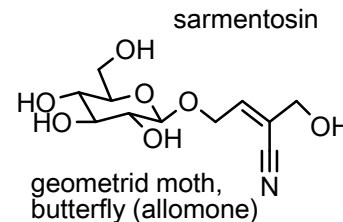
diacetyl putrescine



leaf beetle (allomone ?)

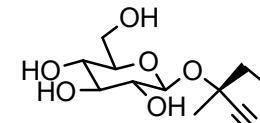


aphid (alarm phe)



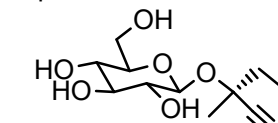
geometrid moth,
butterfly (allomone)

lotaustralin

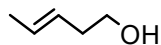


butterfly (allomone)

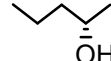
epilotaustralin



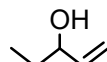
C5 chain



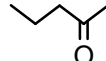
bark beetle
(F aggregation
phe. ?)



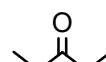
wasp
(alarm phe.)
assassin bug
(sex phe. ?)



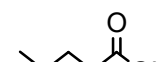
butterfly (larva
allomone)



ground beetle,
darkling beetle
(allomone ?)



scarab beetle (M
aggregation phe.)
assassin bug (alarm phe.)
butterfly (larva allomone)

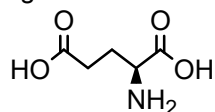


grasshopper
(F. sex phe.)

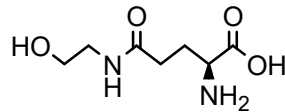


cockroach
(allomone)

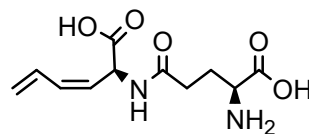
glutamic acid



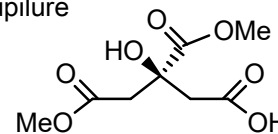
fruit fly (marking phe.)



leaf beetle (allomone)

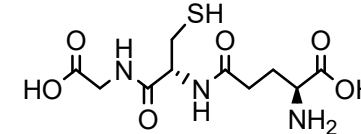


cupilure



spider (F sex phe.)

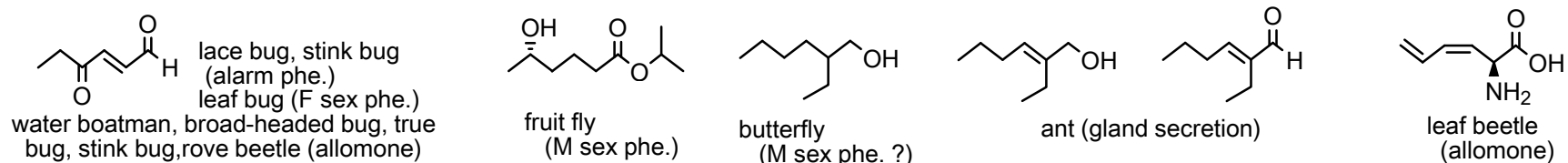
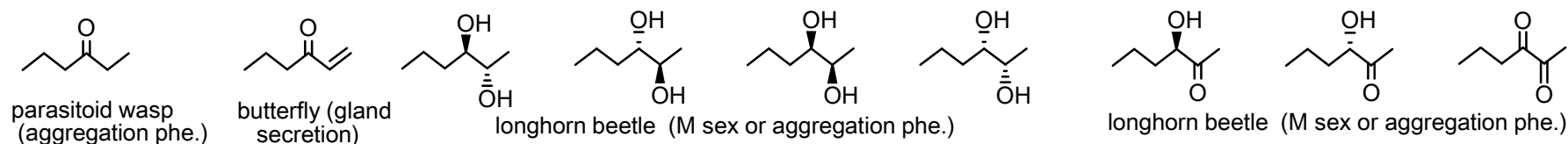
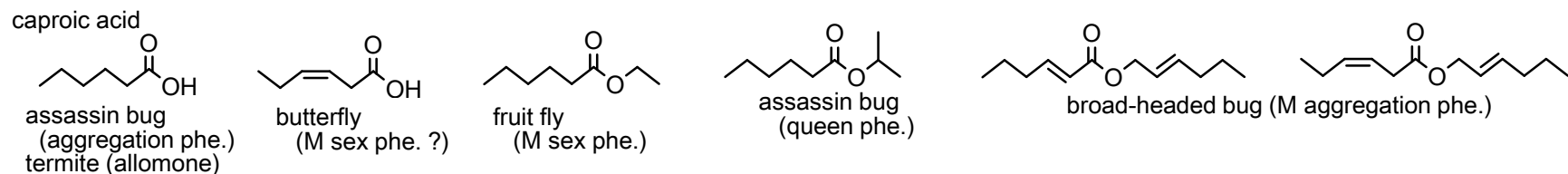
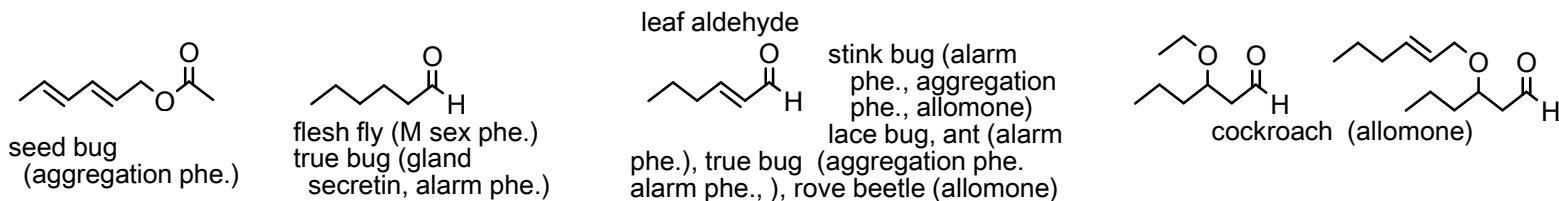
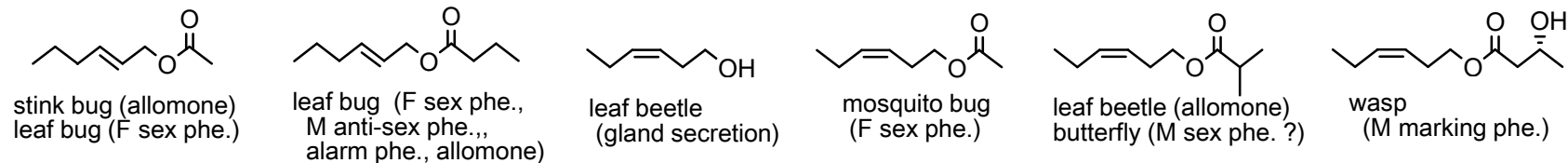
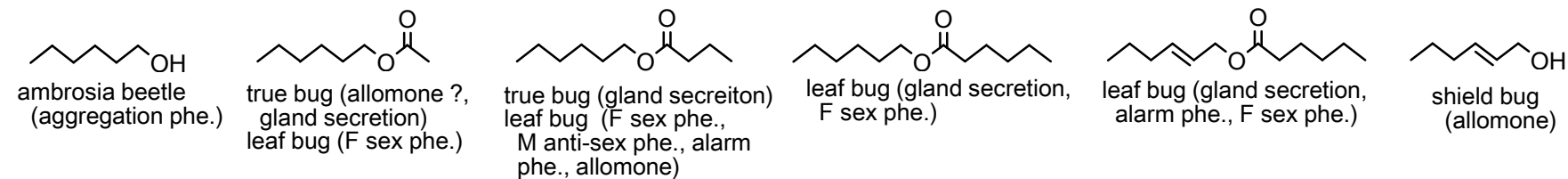
glutathione



fruit fly (marking phe.)

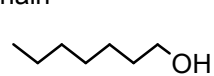
[C-1] Other: Acyclic comp. (iii)

C6 chain

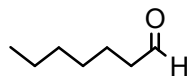


[C-1] Other: Acyclic comp. (iv)

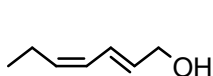
C7 chain



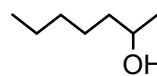
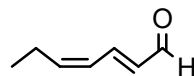
bark beetle (F aggregation phe.)
fruit fly (M sex phe.)



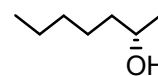
assassin bug (M sex phe.)



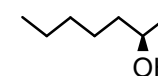
leaf beetle (aggregation phe.)



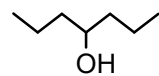
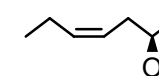
bee (alarm phe.)



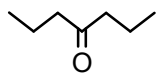
caddis fly (F sex phe.)



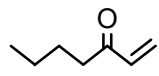
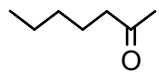
eriocraniid moth (F sex phe.)



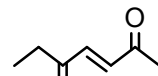
amt (gland secretion)



honey bee, ant, ground beetle (alarm phe.)
caddis fly (F sex phe.)



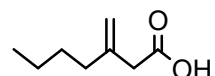
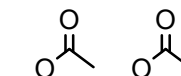
harvestman (allomone ?)



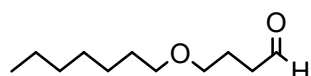
stingless bee (allomone)



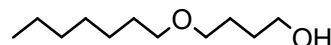
gall midge (F sex phe.)



seed beetle (F sex phe.)

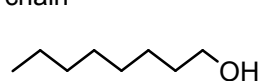


longhorn beetle (M aggregation phe.)

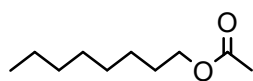


[C-1] Other: Acyclic comp. (v)

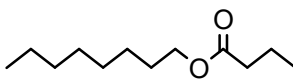
C8 chain



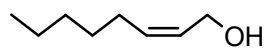
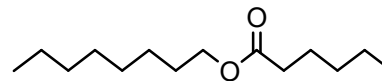
true bug (gland secretion)
leaf bug (F sex phe.)



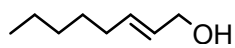
leaf bug (F sex phe.)



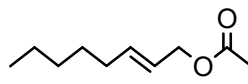
leaf bug (F sex phe.)



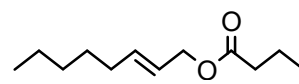
grasshopper
(M sex phe. ?)



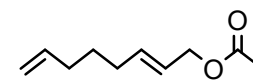
broad-headed bug
(gland secretion)



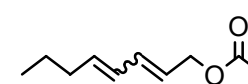
seed bug (F sex phe.,
aggregation phe.)
leaf bug (F sex phe.)
stink bug (allomone)



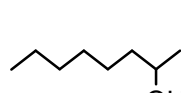
leaf bug (F sex phe.)



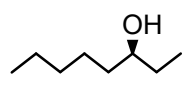
seed bug
(aggregation phe.?)



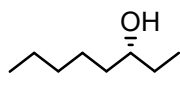
seed bug
(sex phe.?)



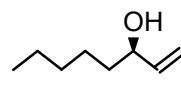
stingless bee
(gland secretion)



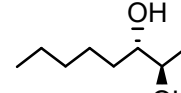
ant (alarm phe.,
gland secretion)



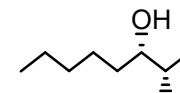
ant (alarm phe.,
aggregation phe.?,
gland secretion)



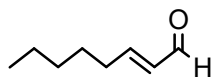
flat bark beetle
(aggregation phe.)



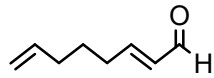
longhorn beetle
(F sex phe.)



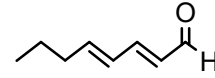
longhorn beetle
(M sex or aggregation phe.)



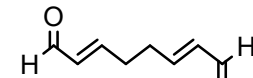
flower bug (F sex phe.,
aggregation phe.?)
true bug (alarm phe.,
stink bug, seed bug, broad-headed bug,
millipede (allomone)
tortrix moth (larva aggregation phe.)



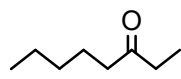
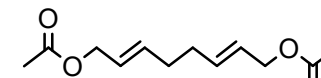
seed bug, flower bug
(aggregation phe.?,
F sex phe.)



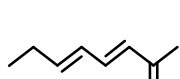
true bug
(aggregation phe.)



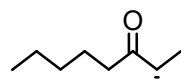
stink bug (gland secretion)



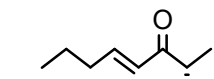
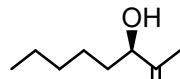
ant (alarm phe.,
aggregation phe. ?)
mining bee, ant
(gland secretion,
harvestman (allomone)



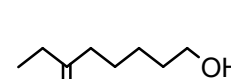
true bug
(aggregation
phe.)



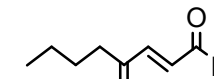
longhorn beetle
(M sex or aggregation phe.)



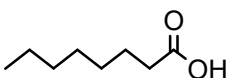
longhorn beetle
(M aggregation phe.)



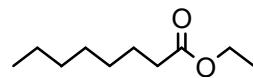
fruit fly (M sex phe.,
gland secretion)



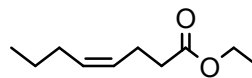
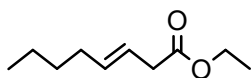
seed bug, red bug (allomone),
water boatman, burrowing bug,
true bug (gland secretion)



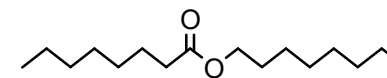
flat bark beetle,
whip scorpion
(allomone ?)



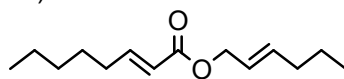
fruit fly (M sex phe.)



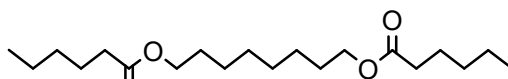
parasitoid wasp
(gland secretion)



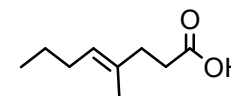
stingless bee (trail phe.)
limonic acid



broad-headed bug
(gland secretion)



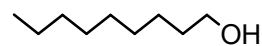
click beetle (F sex phe.)



click beetle
(F sex phe.)

[C-1] Other: Acyclic comp. (vi)

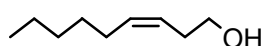
C9 chain



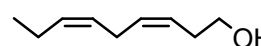
pyralid moth
(M sex phe.)



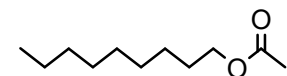
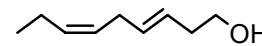
scarab beetle
(F sex phe.)



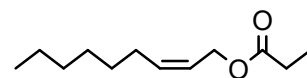
fruit fly
(M sex phe.)



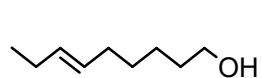
fruit fly (M sex phe.)



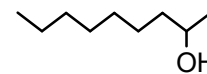
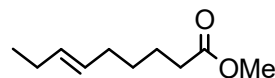
ground beetle (allomone)



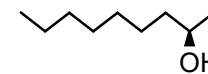
darkling beetle
(F sex phe.)



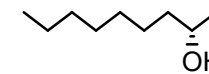
fruit fly (M sex phe.)



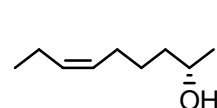
stingless bee
(gland secretion)



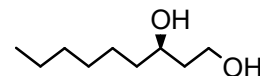
false click beetle
(M aggregation phe.)



caddis fly
(F sex phe.)



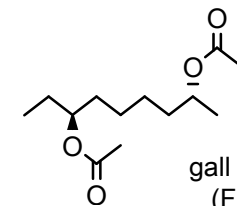
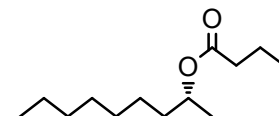
eriocraniid moth
(F sex phe.)



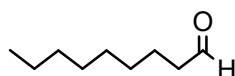
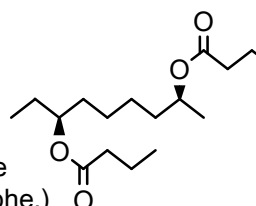
fruit fly (M sex phe.?,
allomone)



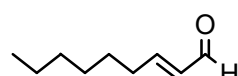
gall midge (F sex phe.)



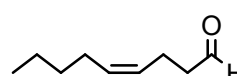
gall midge
(F sex phe.)



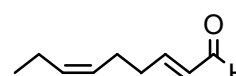
pyralid moth (M sex phe.)
longhorn beetle
(M aggregation phe.)
psylla (F sex phe.)



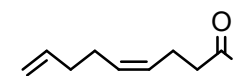
scarab beetle (F sex phe.)
scorpionfly (M sex phe.)
tortrix moth
(larva aggregation phe.)



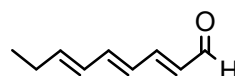
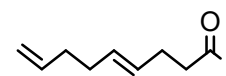
stink bug
(M sex phe.?)



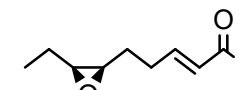
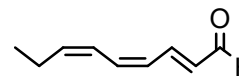
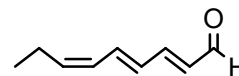
scorpionfly
(M sex phe.)



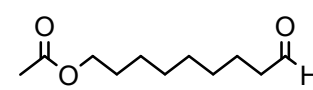
stink bug (M sex phe.?)



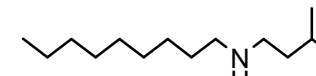
leaf beetle (M aggregation phe.)



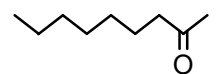
longhorn beetle
(M aggregation phe.)



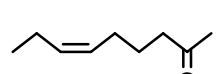
stem sawfly
(M aggregation phe.)



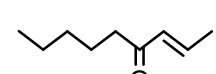
ant (gland secretion)



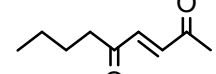
longhorn beetle, sap beetle
(M aggregation phe.)
wasp (alarm phe.)
ant (gland secretion)
caddis fly (M sex phe.)



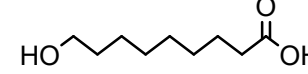
caddis fly (M sex phe.)
eriocraniid moth
(F sex phe.)



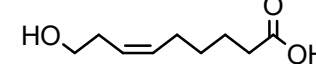
false click beetle
(M aggregation phe.)



stingless bee
(allomone)

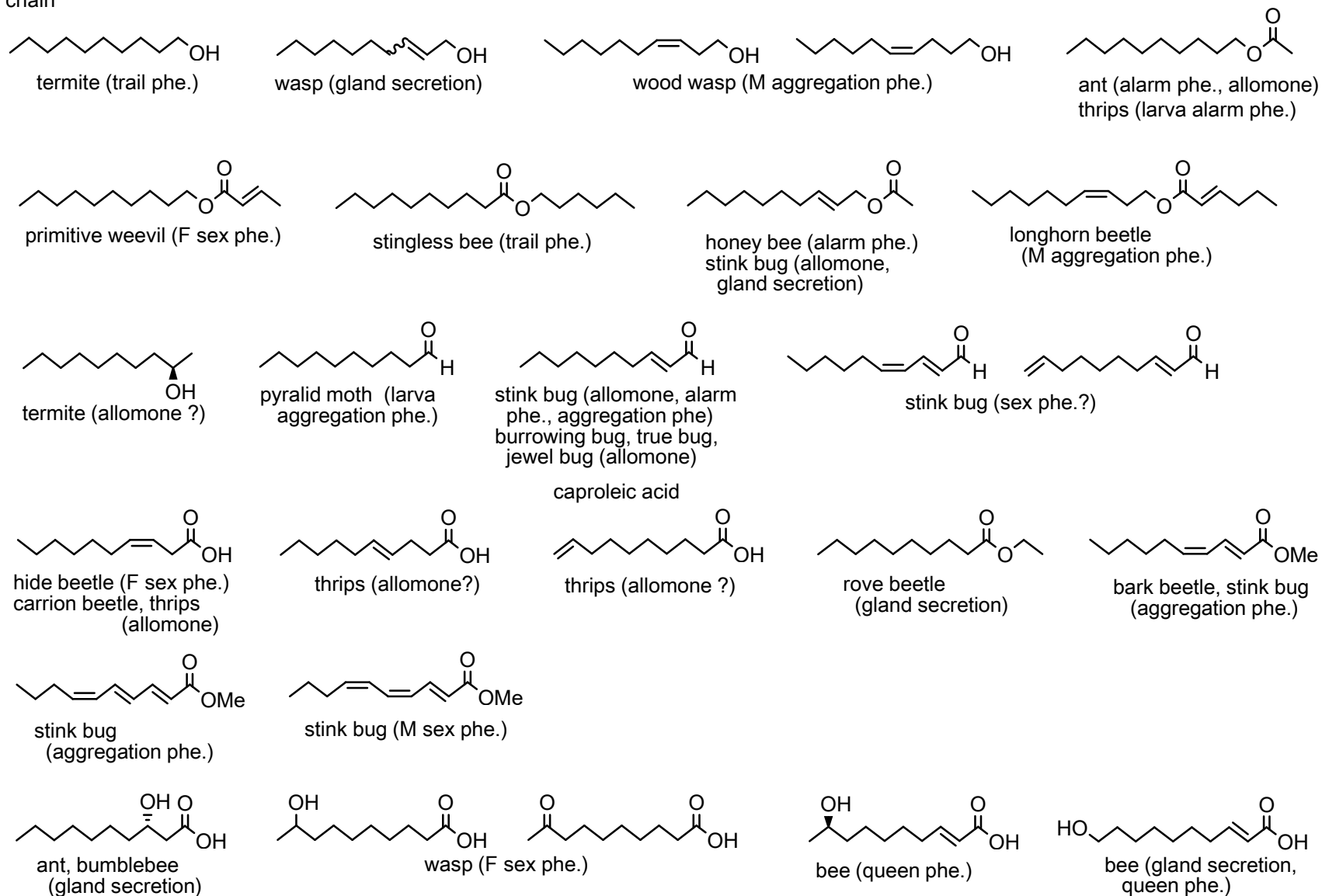


butterfly (M sex phe.?)



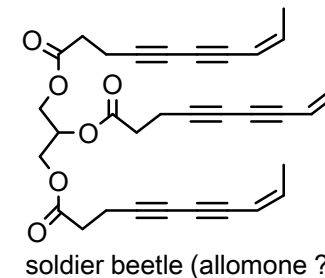
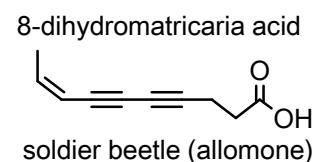
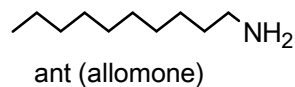
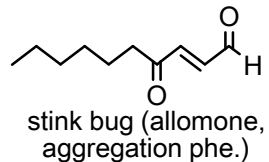
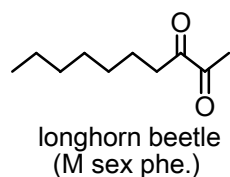
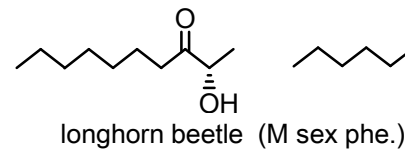
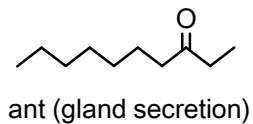
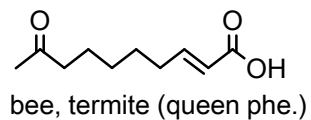
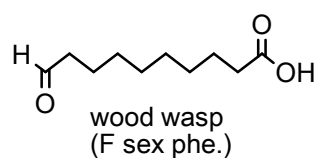
[C-1] Other: Acyclic comp. (vii)

C10 chain

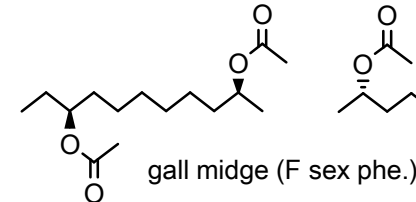
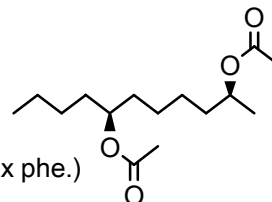
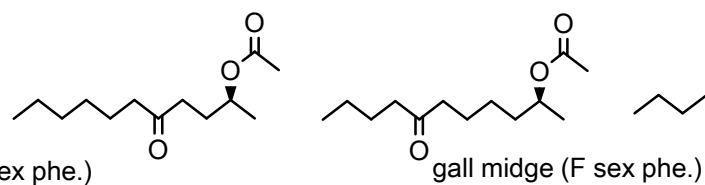
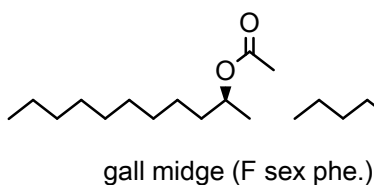
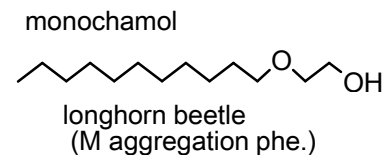
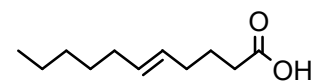
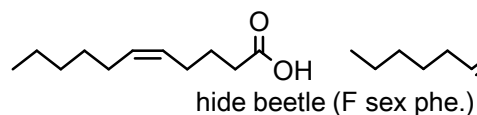
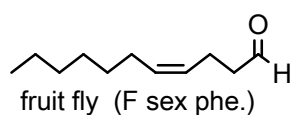
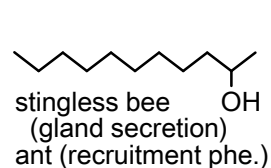
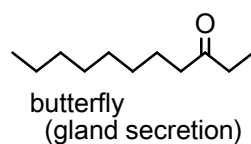
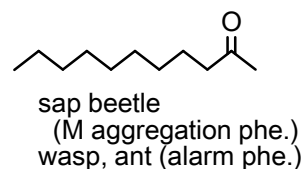
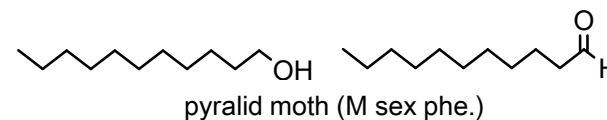
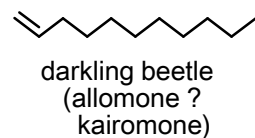
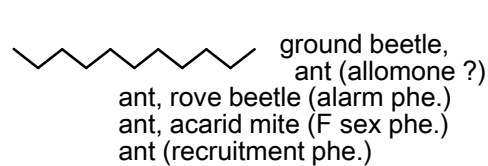


[C-1] Other: Acyclic comp. (viii)

C10 chain

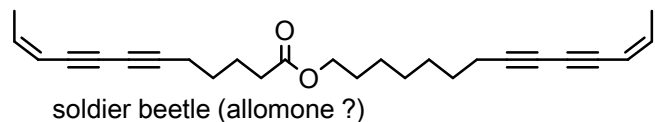
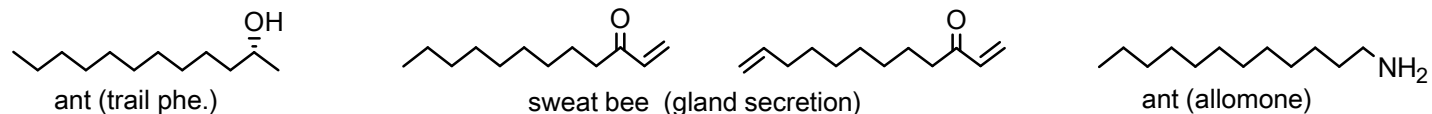
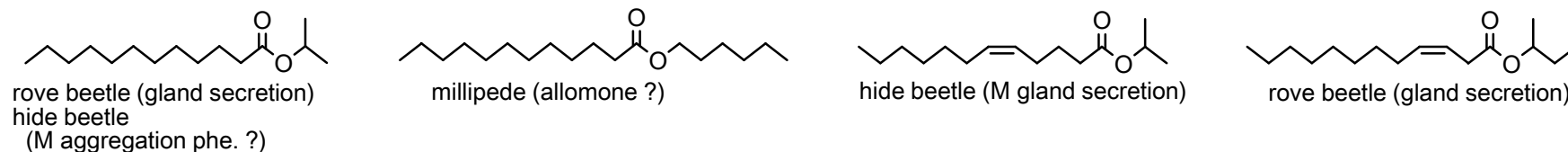
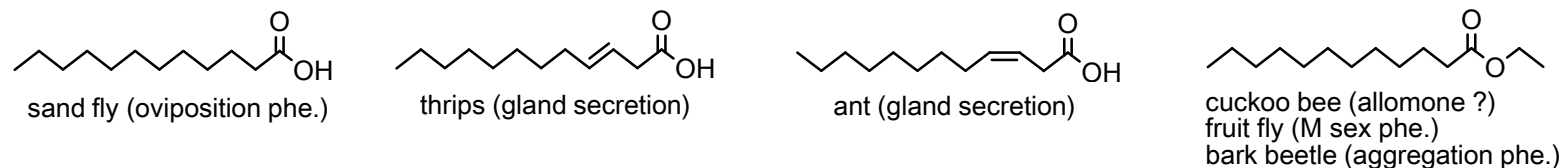
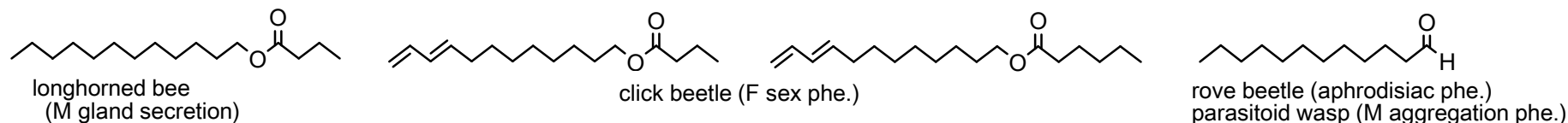
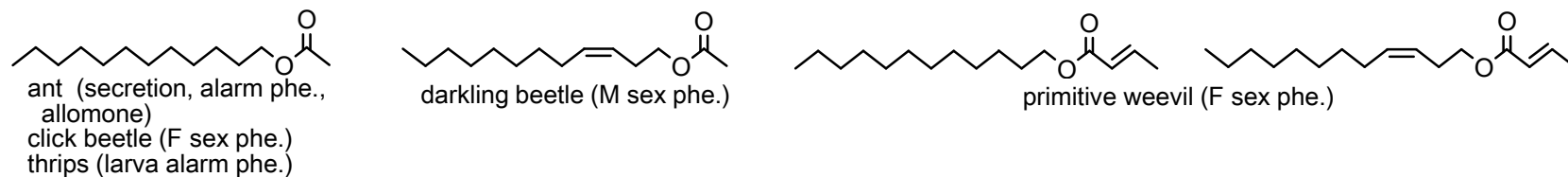
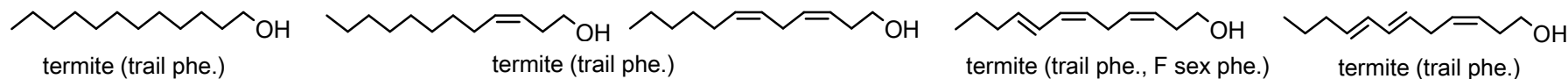


C11 chain



[C-1] Other: Acyclic comp. (ix)

C12 chain

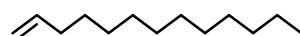


[C-1] Other: Acyclic comp. (x)

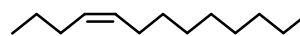
C13 chain



ant (gland secretion,
F sex phe., alarm phe.
allomone)
burrowing bug, jewel bug,
stink bug (gland secretion)
true bug, red bug (allomone)



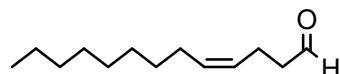
darkling beetle (M sex phe.)
stink bug (allomone ?)



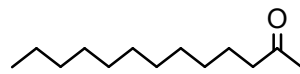
ant (F sex phe.,
gland secretion)
green lacewing (allomone, alarm phe., gland secretion)
rove beetle (aphrodisiac phe.), stink bug (allomone ?)



green lacewing
(gland secretion)



parasitoid wasp (F sex phe.)



wasp (marking phe. ?)
caddis fly (F sex phe. ?)
harvestman (allomone ?), ant (secretion, allomone ?)
fruit fly (M aggregation phe.),



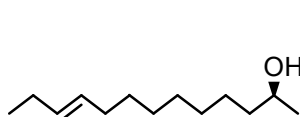
harvestman (allomone ?)



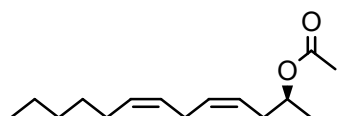
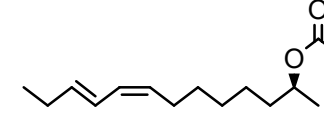
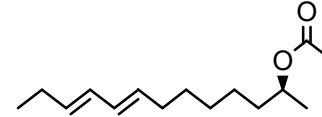
gall midge (F sex phe.)
fruit fly (M aggregation phe.)



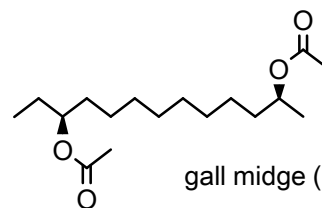
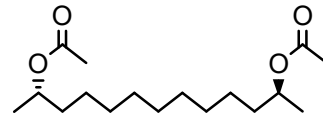
gall midge (F sex phe.)



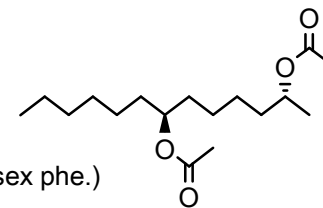
gall midge (F sex phe.)



gall midge (F sex phe.)

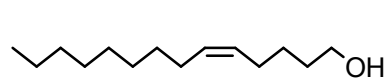


gall midge (F sex phe.)

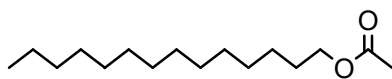


[C-1] Other: Acyclic comp. (xi)

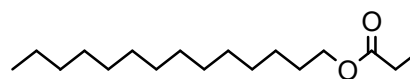
C14 chain



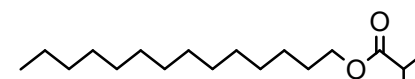
sawfly (F sex phe.)



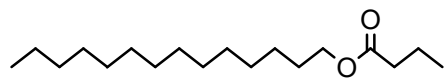
ant (alarm phe.)
ground beetle, bee (allomone)
parasitoid wasp (F sex phe.)
bumblebee (gland secretion)



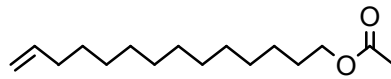
termite (F sex phe.)



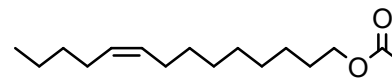
broad-headed bug
(M aggregation phe.)



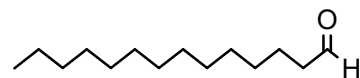
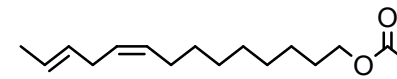
longhorned bee (M gland secretion)



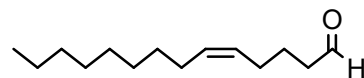
click beetle (F sex phe.)



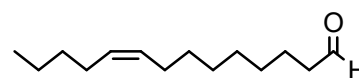
bolas spider (allomone: prey attractant)



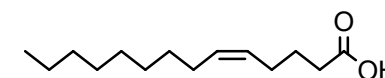
mantid, parasitoid wasp
(F sex phe.)
ant (queen allomone)



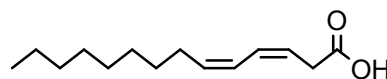
rove beetle (aphrodisiac phe.)



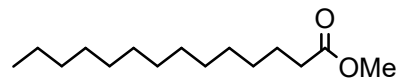
bolas spider
(allomone: prey attractant)



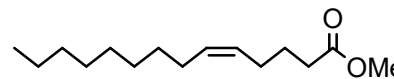
thrips (allomone?)



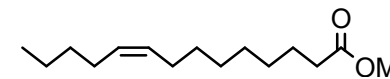
hide beetle (F sex phe.)



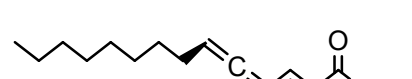
cuckoo bee (F marking phe.)



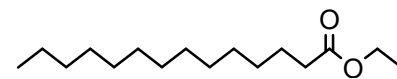
scarab beetle (F sex phe.)



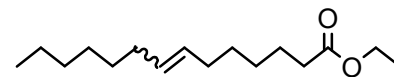
fruit fly (M anti-aphrodisiac phe.)



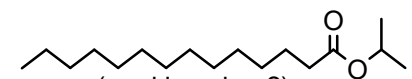
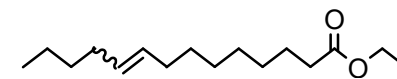
seed beetle (M sex phe.)



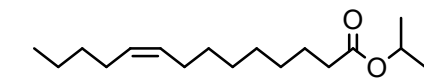
cuckoo bee (allomone ?)
wasp (marking phe. ?)
fruit fly (M sex phe.)



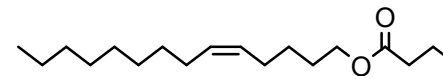
bumblebee (M marking phe. ?)



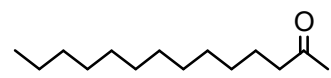
wasp (marking phe. ?)
hide beetle (M aggregation phe. ?)



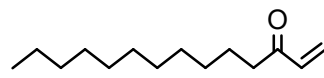
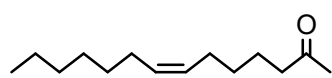
hide beetle (M aggregation phe. ?)



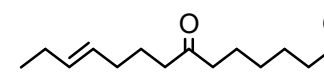
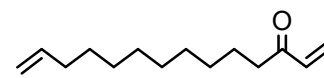
stingless bee (secretion)



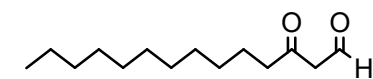
scarab beetle (F sex phe.)



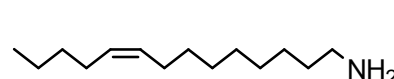
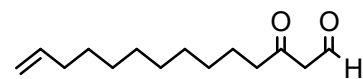
termite (allomone)



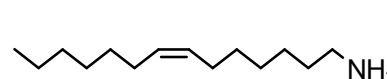
butterfly (M sex phe. ?)



termite (allomone)

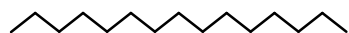


ant (allomone ?)

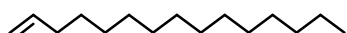


[C-1] Other: Acyclic comp. (xii)

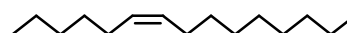
C15 chain



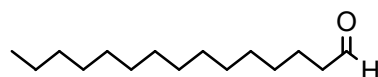
true bug, small carpenter bee
(allomone ?), wasp (F sex phe.)
ant (gland secretion)



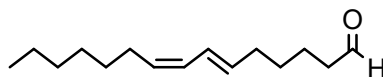
darkling beetle (allomone)



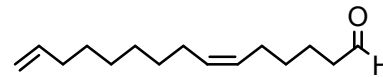
acarid mite (alarm phe.)



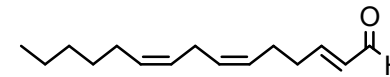
mantid (F sex phe.)



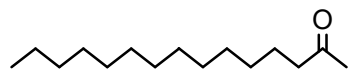
longhorn beetle (M aggregation phe.)



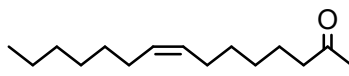
webspinning sawfly (F sex phe.)



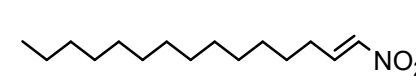
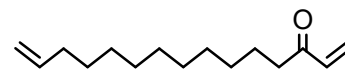
longhorn beetle (aggregation phe.)



wasp (marking phe.?, trail phe.?)
fruit fly (M aggregation phe.)
darkling beetle (allomone ?)
ant, cuckoo bee (gland secretion)



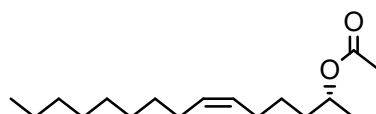
termite (allomone)



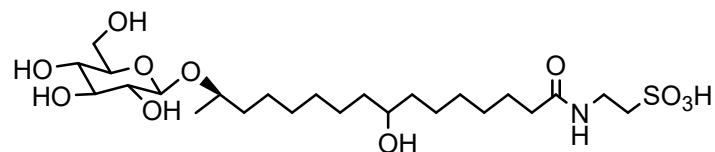
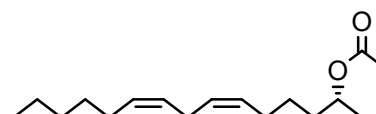
termite (allomone)



fruit fly (M aggregation phe.)



gall midge (F sex phe.)



fruit fly (marking phe.)

[C-1] Other: Acyclic comp. (xiii)

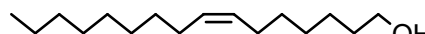
C16 chain



acrolepiid moth (M sex phe.)



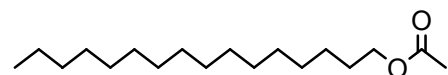
bumblebee (M marking phe. ?)
noctuid moth (M gland secretion)



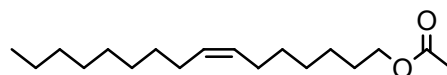
scarab beetle (F sex phe.)



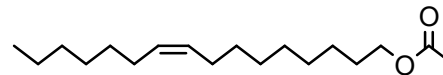
bumblebee (M marking phe. ?)



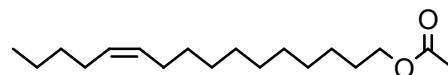
ground beetle (allomone)
cuckoo bee (marking phe. ?)
noctuid moth, bumblebee (gland secretion), spider (F sex phe.)



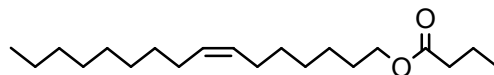
bumblebee (M marking phe. ?)



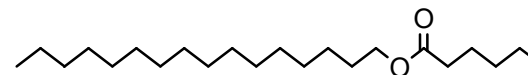
thrips (gland secretion)



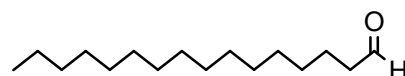
parasitoid wasp (F sex phe.)



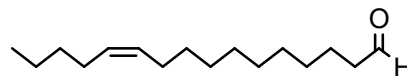
stingless bee (secretion)



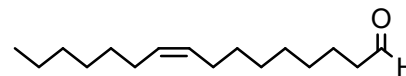
sweat bee (gland secretion)



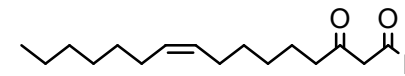
wasp (M marking phe. ?)



bolas spider (allomone: prey attractant)

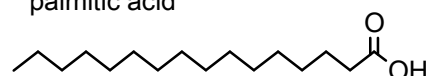


ant (trail phe., aggregation phe.)
parasitoid wasp (F sex phe.)



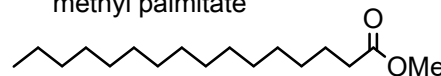
termite (allomone)

palmitic acid

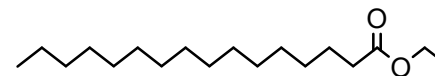


leafroller moth (M-to-M inhibitory phe.)
longhorned bee (F gland secretion)

methyl palmitate

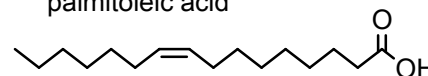


cuckoo bee (F marking phe.)
wasp (F allomone)
tineid moth (M aggregation phe.)
fruit fly (marking phe. ?)



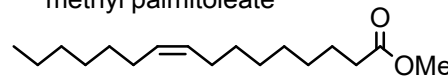
cuckoo bee (allomone ?)
plasterer bee (gland secretion)

palmitoleic acid

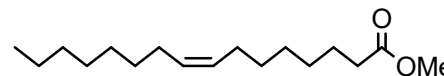


wasp (marking phe. ?)

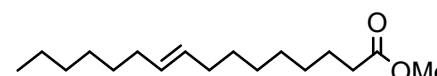
methyl palmitoleate



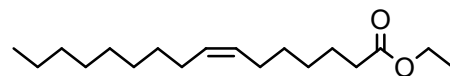
tineid moth (M aggregation phe.)
tsetse fly (F sex phe.)



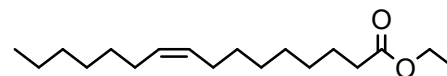
stink bug (M sex phe.)



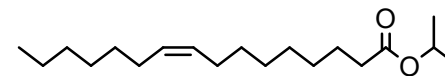
fruit fly (marking phe. ?)



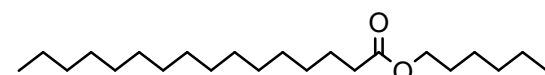
wasp (M marking phe. ?)



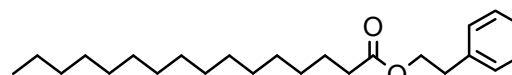
parasitoid wasp (F sex phe.)



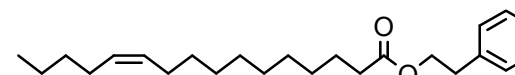
rove beetle (M aggregation phe.)



butterfly (M aphrodisiac phe.)

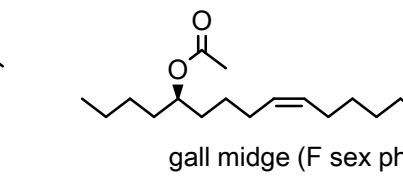
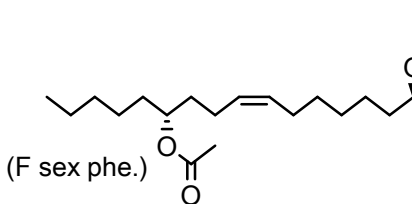
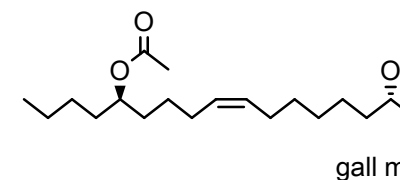
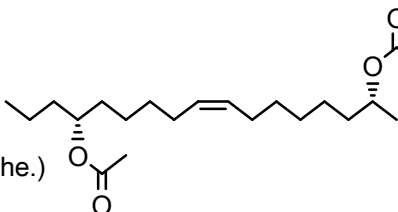
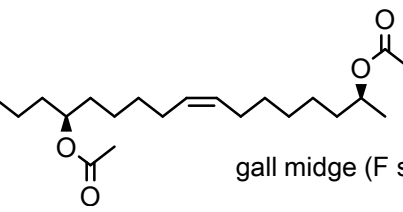
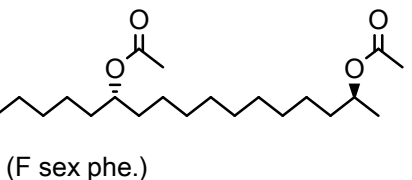
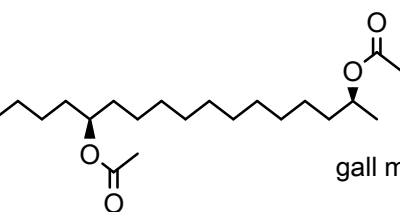
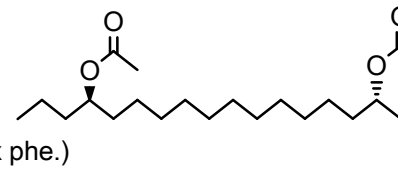
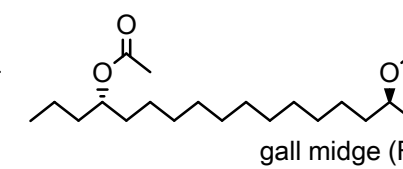
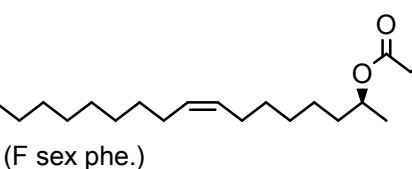
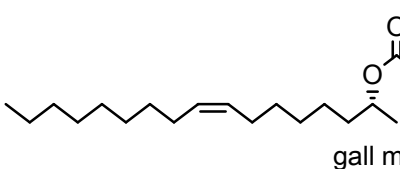
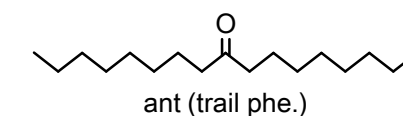
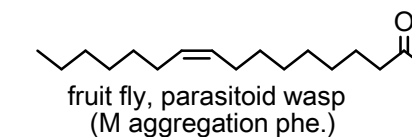
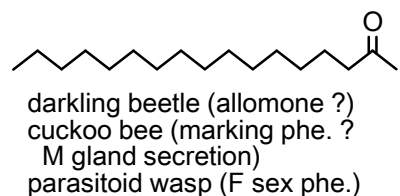
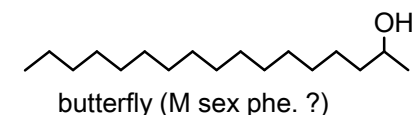
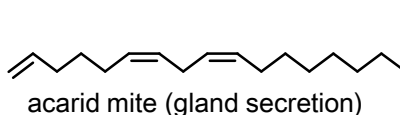
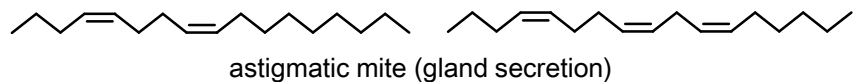
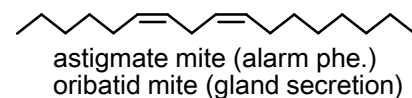
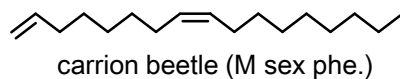
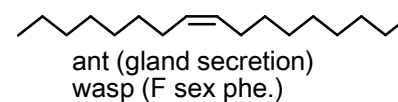
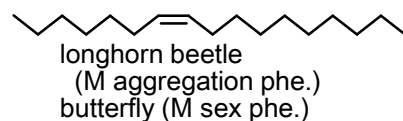
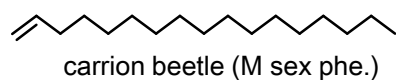
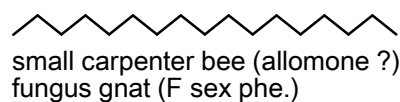


butterfly (M sex phe. ?)



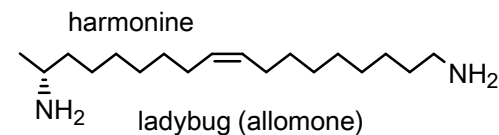
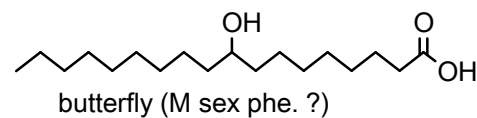
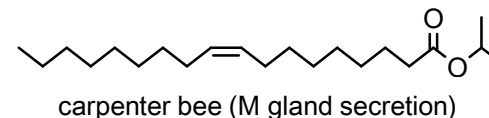
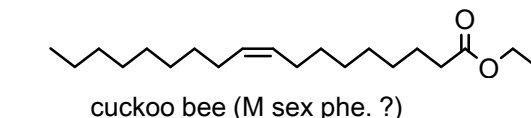
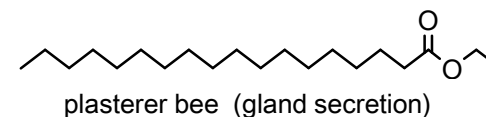
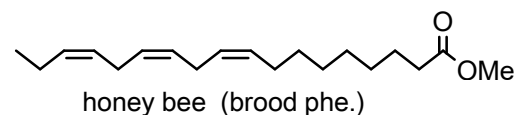
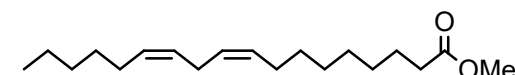
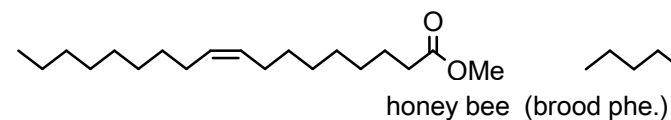
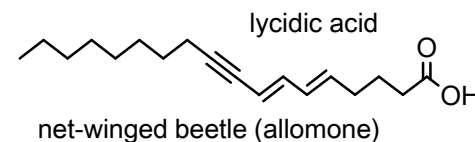
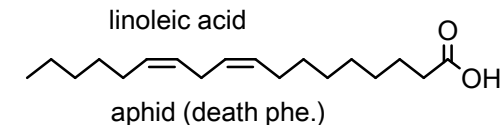
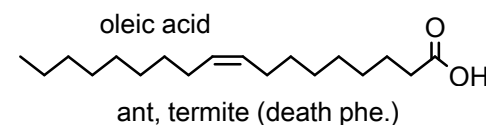
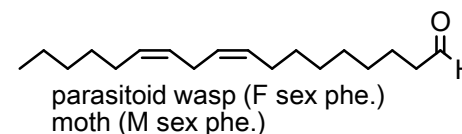
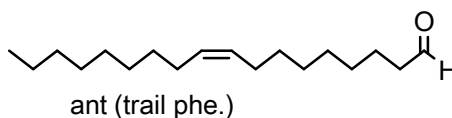
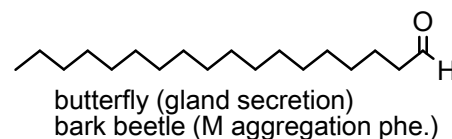
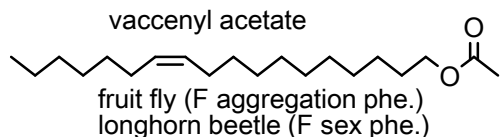
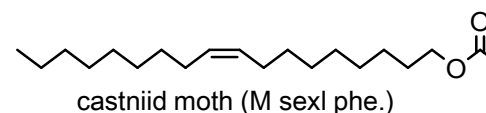
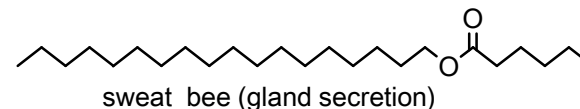
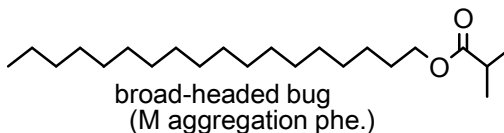
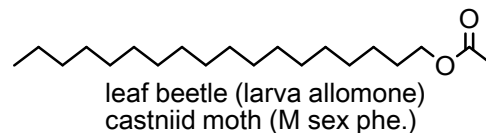
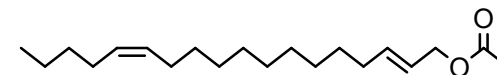
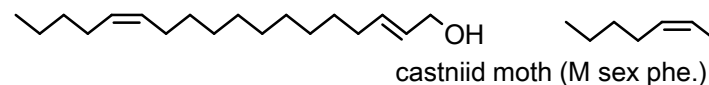
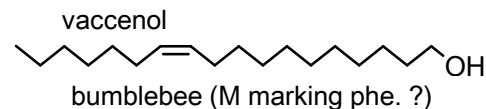
[C-1] Other: Acyclic comp. (xiv)

C17 chain



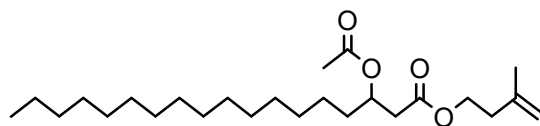
[C-1] Other: Acyclic comp. (xv)

C18 chain

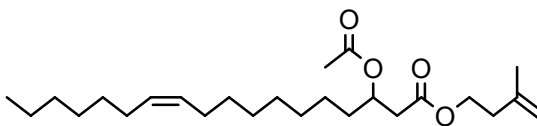


[C-1] Other: Acyclic comp. (xvi)

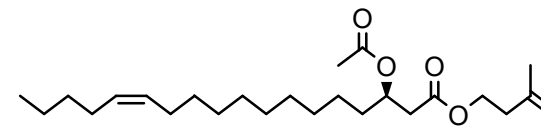
C18 chain



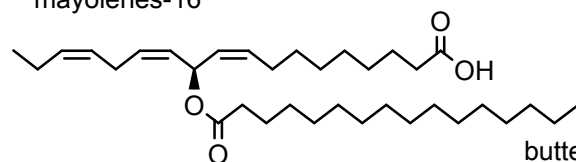
butterfly (M gland secretion)



butterfly (M gland secretion)

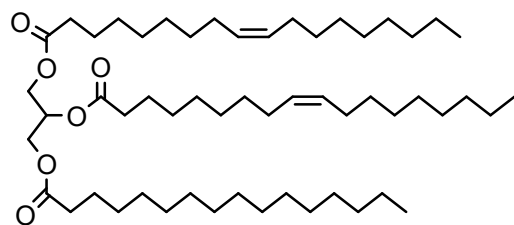
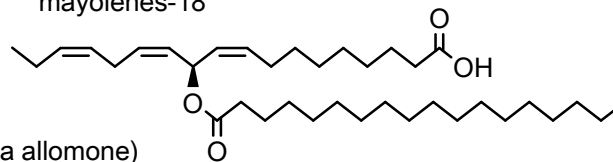


mayolenes-16



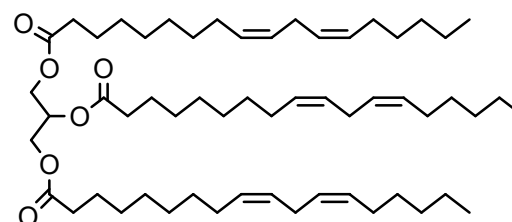
butterfly (larva allomone)

mayolenes-18



honey bee (brood phe.)

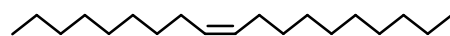
trilinolein



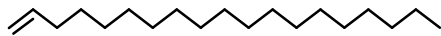
termite (F sex phe. ?)

[C-1] Other: Acyclic comp. (xvii)

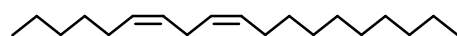
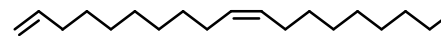
C19 chain



ant (marking phe.)
thrips (gland secretion)



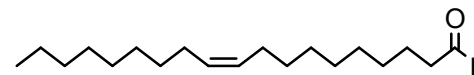
carrion beetle (M sex phe. ?)



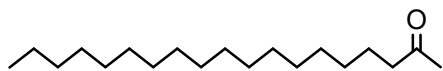
mite (alarm phe.?)



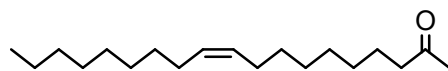
ant (gland secretion)



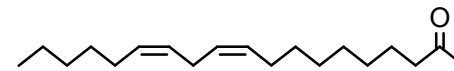
sawfly (F sex phe.)



seed beetle (F sex phe.)



darkling beetle (allomone ?)
wasp (M marking phe.)



termite (trail phe.)

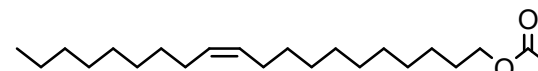
C20 chain



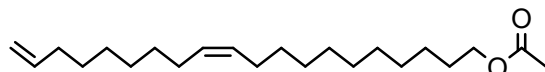
longhorned bee
(F gland secretion)



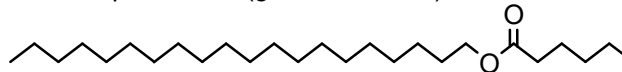
honey bee (worker alarm phe.)
wasp (M marking phe.)
carpenter bee (gland secretion)



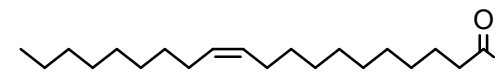
leaf beetle (larva allomone)
fruit fly (M aggregation phe.)



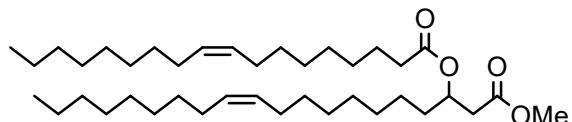
thrips (allomone)



sweat bee (gland secretion)



ant (trail phe.)

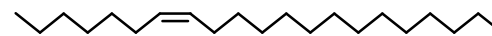


pyralid moth (larva trail phe.)

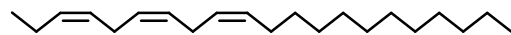
C21 chain



fruit fly (M aggregation phe.)



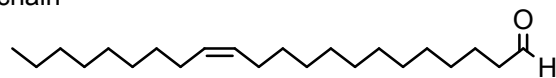
rove beetle, plasterer bee (F sex phe.)



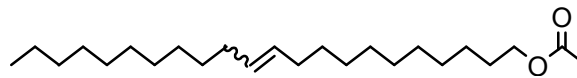
erebid moth (M sex phe.)

[C-1] Other: Acyclic comp. (xviii)

C22 chain



ant (trail phe.)

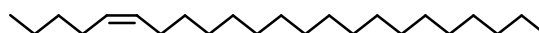


fruit fly (M anti-aphrodisiac phe.)

C23 chain



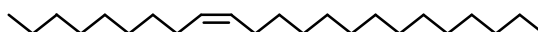
bumblebee (marking phe.), ant (gland secretion)



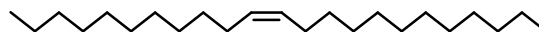
stable fly (F sex phe.)



fruit fly, rove beetle, plasterer bee (F sex phe.)



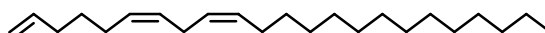
stable fly, firefly, longhorn beetle (F sex phe.)
fruit fly, spider (M sex phe.)
ant (marking phe., gland secretion)



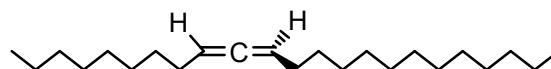
soldier beetle (M sex phe.)



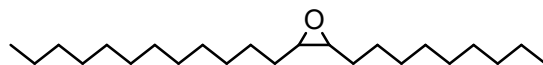
wasp (F sex phe.)



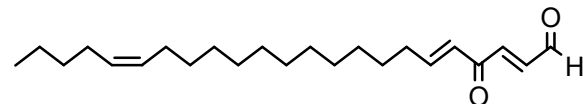
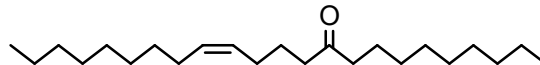
fungus gnat (F sex phe.)



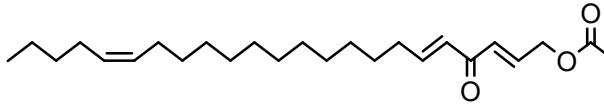
scarab beetle (F cuticular HC)



stable fly (F sex phe.)

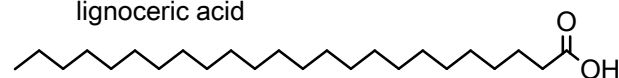


ant (allomone)



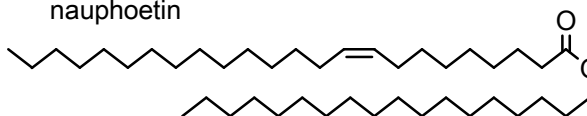
C24 chain

lignoceric acid



termite (gland secretion)

nauphoetin

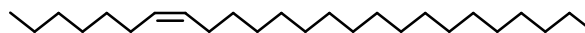


[C-1] Other: Acyclic comp. (xix)

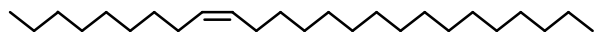
C25 chain



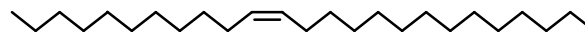
cuckoo bee (gland secretion)



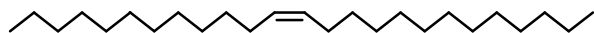
longhorn beetle, plasterer bee (F sex phe.)



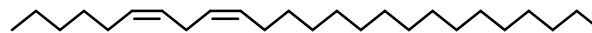
fly, longhorn beetle, mining bee, leaf bug
(F sex phe.), wasp (brood phe.)



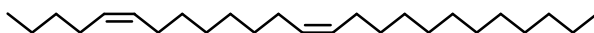
fruit fly (F sex phe.)



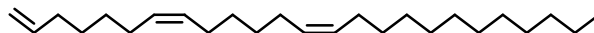
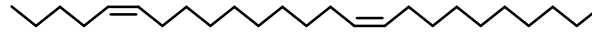
ladybug (oviposition-deterring phe.)



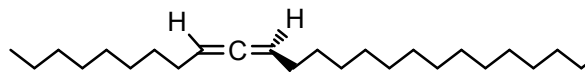
wasp (F sex phe.)



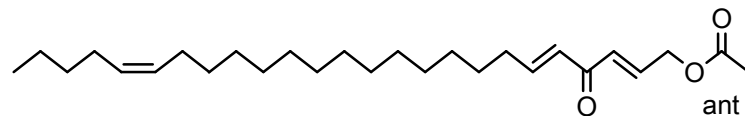
fruit fly (F sex phe.)



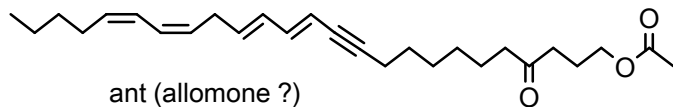
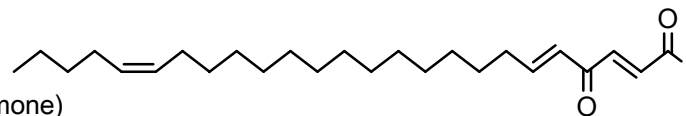
stable fly (M sex phe. ?)



scarab beetle (F cuticular HC)



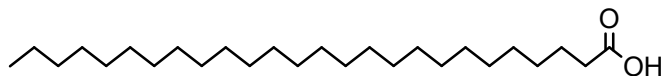
ant (allomone)



ant (allomone ?)

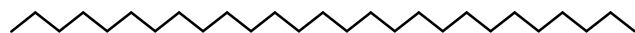
[C-1] Other: Acyclic comp. (xx)

C26 chain

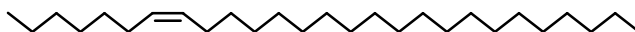


termite (gland secretion)

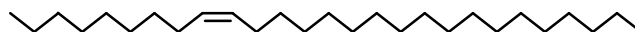
C27 chain



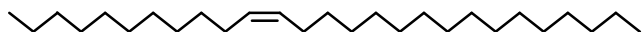
longhorn beetle (F sex phe.)



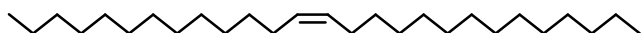
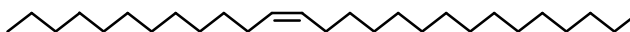
longhorn beetle, wood wasp (F sex phe.)



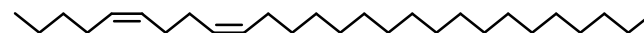
termite (allomone ?), stable fly (M sex phe. ?)
stable fly, longhorn beetle, mining bee (F sex phe.)



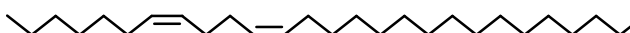
mining bee (F sex phe.)



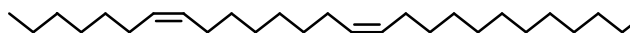
stable fly (M sex phe.)



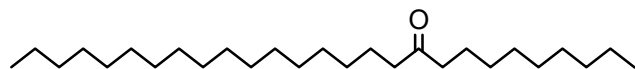
fruit fly (F sex phe.)



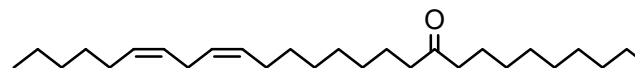
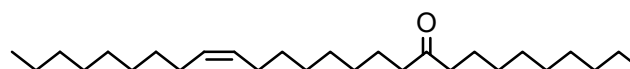
parasitoid wasp (F sex phe.)



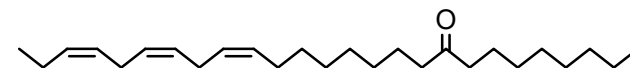
fruit fly (F sex phe.)



longhorn beetle (F sex phe.)

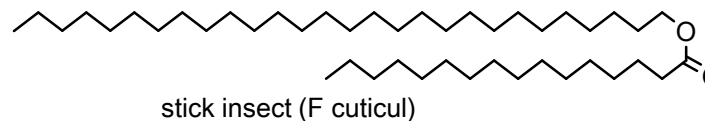
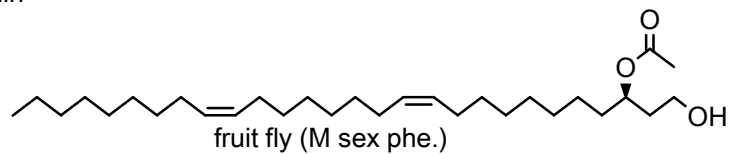


longhorn beetle (F sex phe.)

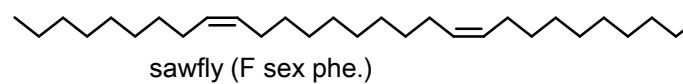
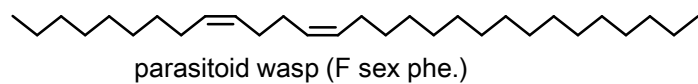
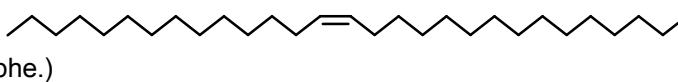
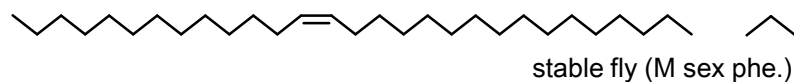
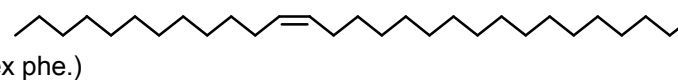
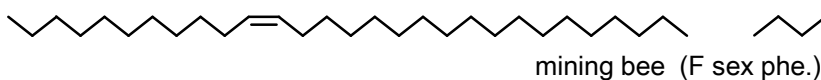
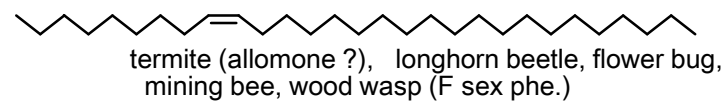
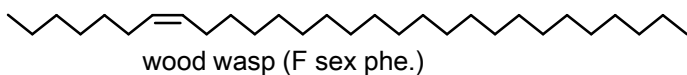
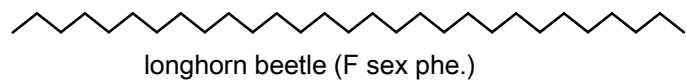


[C-1] Other: Acyclic comp. (xxi)

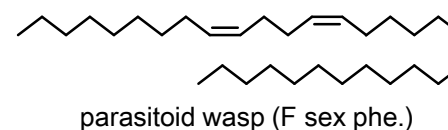
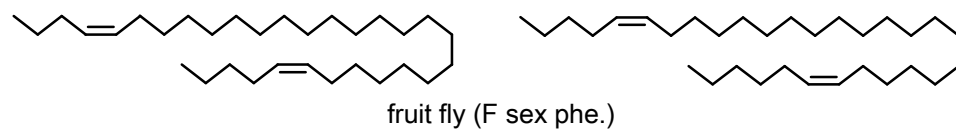
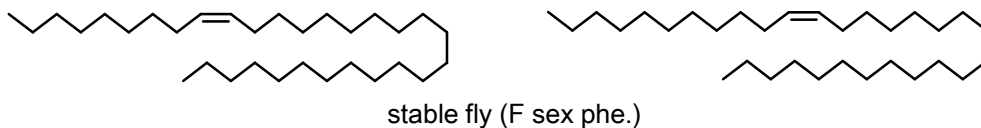
C28 chain



C29 chain

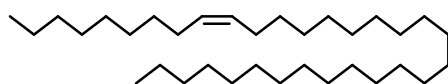


C31 chain

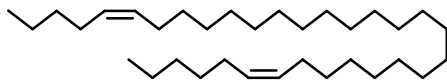


[C-1] Other: Acyclic comp. (xxii)

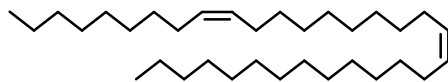
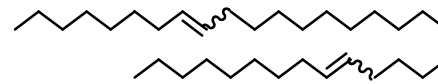
C33 chain



stable fly (F sex phe.)



fruit fly (F sex phe.)



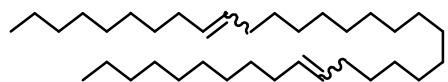
sawfly (F sex phe.)

C34 chain

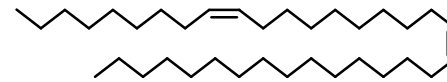


leaf beetle (sex phe. ?)

C35 chain

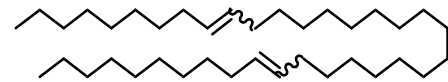


fruit fly (F sex phe.)



sawfly (F sex phe.)

C37 chain

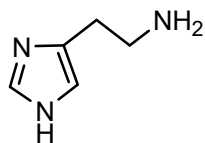


fruit fly (F sex phe.)

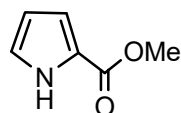
[C-2] Other: True alkaloids (i)

Aromatic comp.

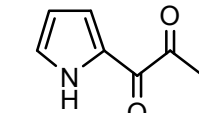
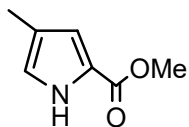
histamine



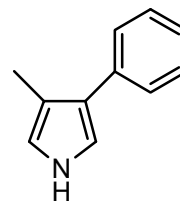
saturniid moth (larva allomone)
true bug (aggregation phe.)



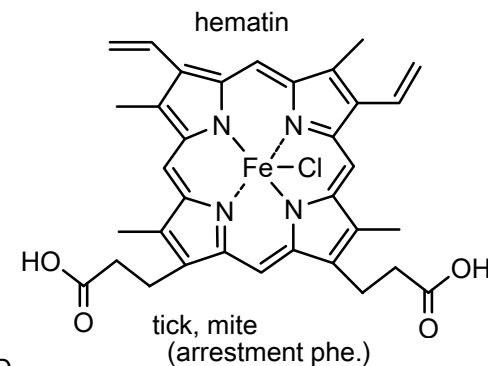
ant (trail phe.)



longhorn beetle (M aggregation phe.)

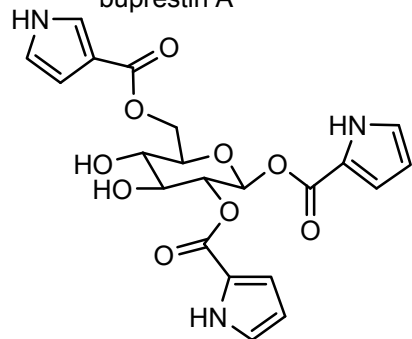


ant (gland secretion)



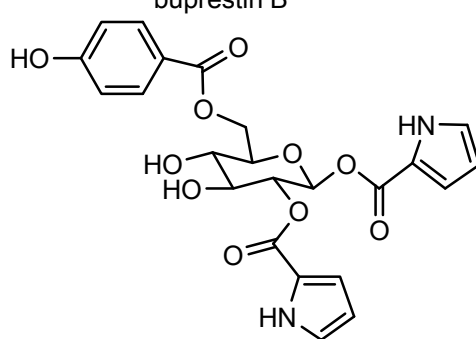
tick, mite (arrestment phe.)

buprestin A



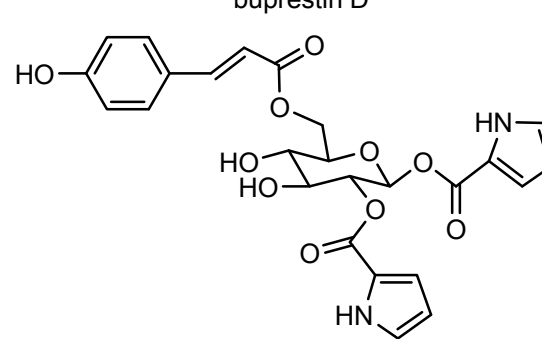
jewel beetle (allomone)

buprestin B

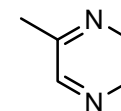


jewel beetle (allomone)

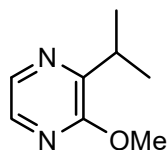
buprestin D



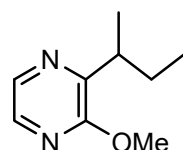
jewel beetle (allomone)



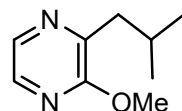
ant (trail phe.)
fruit fly (gland secretion)



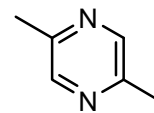
butterfly, stink bug, net-winged beetle (allomone), ladybug (aggregation phe.)



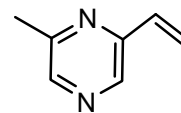
butterfly, arctiid moth stink bug, net-winged beetle (allomone) ladybug (aggregation phe.)



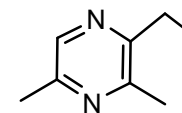
butterfly, arctiid moth (allomone), ladybug (aggregation phe.)



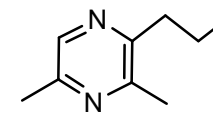
ant (trail phe., gland secretion) wasp (alarm phe.) fruit fly (M sex phe.)



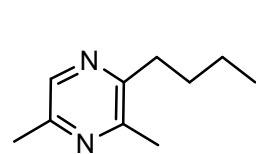
fruit fly (M sex phe.)



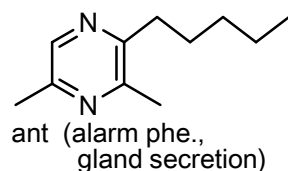
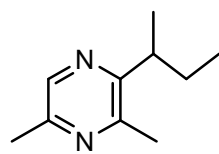
ant, fruit fly (gland secretion)



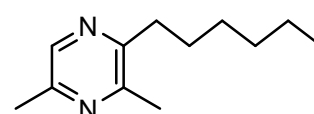
ant (gland secretion)



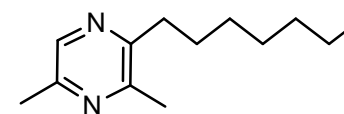
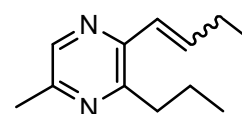
ant (gland secretion)



ant (alarm phe., gland secretion)



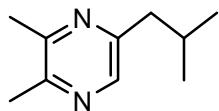
ant (gland secretion)



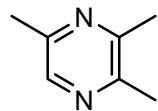
ant (gland secretion)

[C-2] Other: True alkaloids (ii)

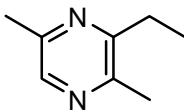
Aromatic comp.



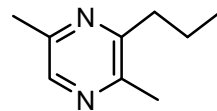
ant (trail phe.)



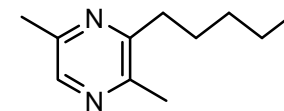
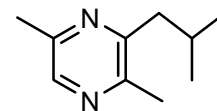
ant (trail phe.,
gland secretion)
fruit fly (M sex phe.,
gland secretion)



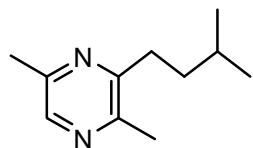
ant (trail phe.,
alarm phe.)



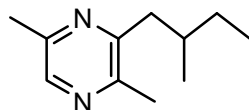
ant (gland secretion)



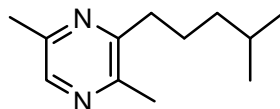
ant (gland secretion)



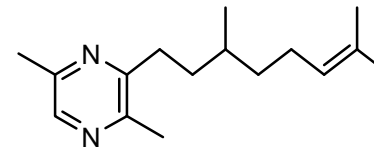
ant (alarm phe., gland
secretion, allomone)
flower wasp (F sex phe.)
wasp (marking phe.)
leaf insect (allomone)



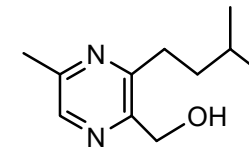
ant (alarm phe.,
gland secretion)
leaf insect (allomone)



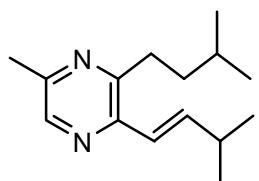
ant (gland secretion)



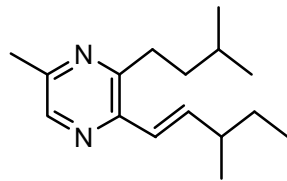
ant (alarm phe.)



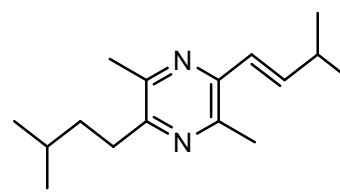
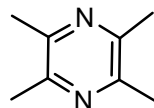
flower wasp
(F sex phe.)



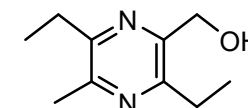
ant (gland secretion)



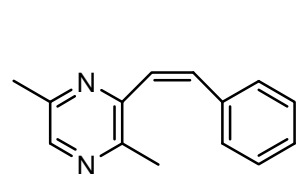
fruit fly (M sex phe.,
gland secretion)



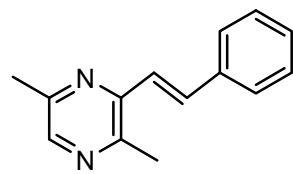
ant (gland secretion)



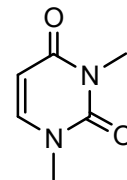
flower wasp
(F sex phe.)



ant (gland secretion)

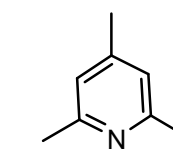
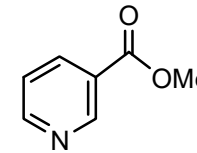


N,N-dimethyluracil

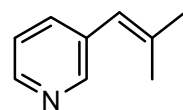


ant (trail phe.)

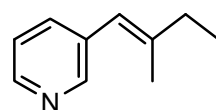
methyl nicotinate



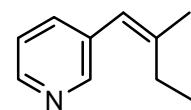
ladybug
(aggregation phe.)



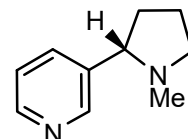
rove beetle (allomone)



rove beetle
(allomone)

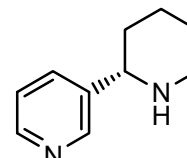


nicotine



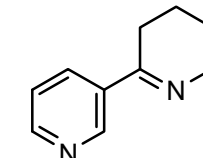
harvestman
(allomone ?)

anabasine

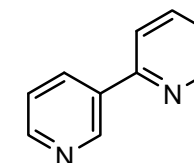


ant (gland secretion, allomone, trail phe.)

anabaseine



harvestman (allomone ?)

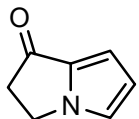


ant (gland secretion)

[C-2] Other: True alkaloids (iii)

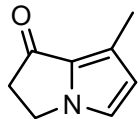
Aromatic comp.

nordanaidone

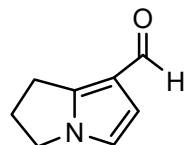


butterfly (M sex phe.)

danaidone

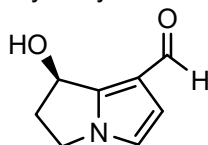


danaidal

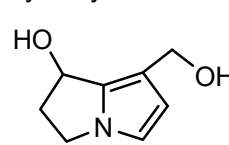


butterfly, arctiid moth (M sex phe.?)

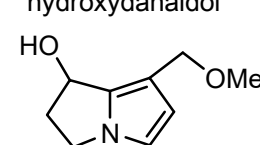
hydroxydanaidal



hydroxydanaidol

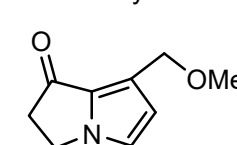


9-O-methyl-hydroxydanaidol

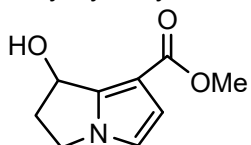


butterfly (M sex phe.?)

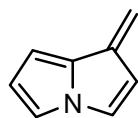
9-methoxydanaidol



methyl hydroxydanaidoate



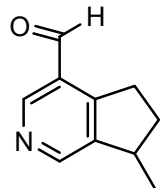
butterfly (M sex phe.?)



actinidine

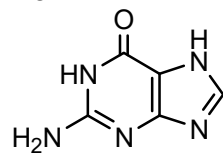
ant (alarm phe.)
parasitoid wasp,
rove beetle, tick insect
(allomone)

boschniakine

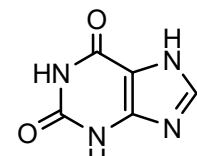


stick insect
(allomone ?)

guanine

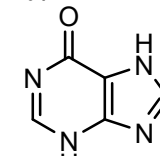


xanthine

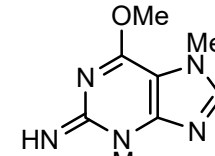


tick (arrestment phe.)

hypoxanthine

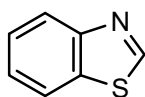


himantarine



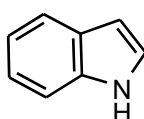
centipede
(galand secretion)

benzothiazole



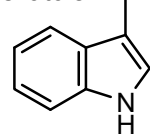
pleasing fungus
beetle (allomone)
butterfly (gland
secretion)

indol



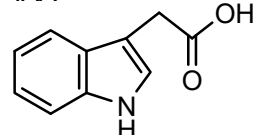
butterfly (M sex
phe. ?)
ant (trail phe.)
pleasing fungus
beetle, caddis fly
(allomone)

skatole

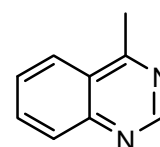


stingless bee, wasp,
pleasing fungus
beetle, caddis fly
(allomone)
ant, wasp (alarm phe.)
green lacewing
(gland secretion)

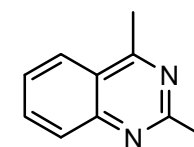
IAA



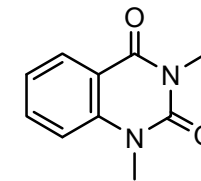
water beetle
(allomone ?)



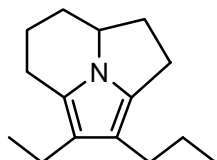
assassin bug
(aggregation phe.)
parasitoid wasp
(M sex phe.)



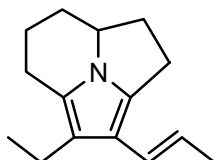
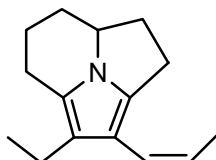
assassin bug
(aggregation phe.)



scarab beetle
(F sex phe.)

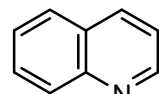


ant (allomone)

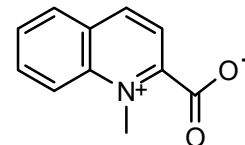


ant (allomone)

quinoline

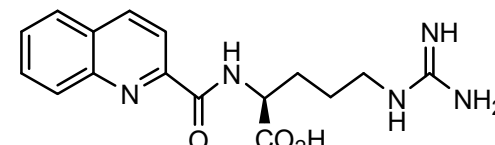


walking stick
(allomone)

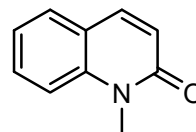


firefly (allomone)

N α -quinaldyl-L-arginine



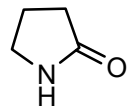
ladybug (allomone)



net-winged beetle
(allomone ?)

[C-2] Other: True alkaloids (iv)

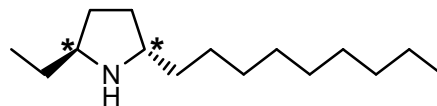
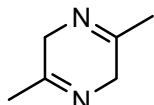
C4 ring



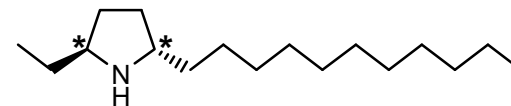
moth (larva allomone)



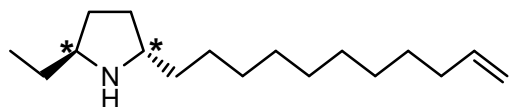
fruit fly (M sex phe.)



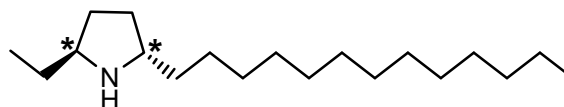
ant (allomone)



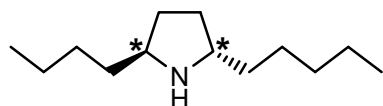
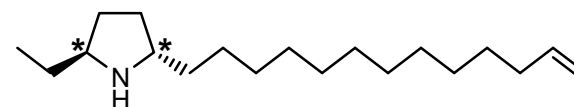
ant (allomone)



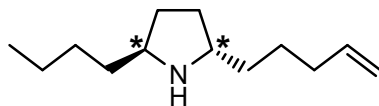
ant (allomone?)



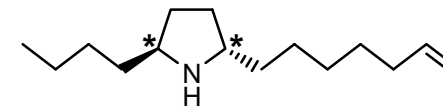
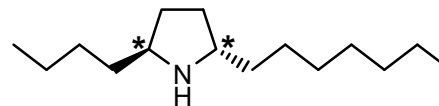
ant (allomone)



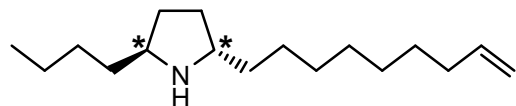
ant (allomone?)



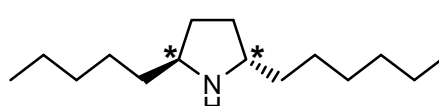
ant (allomone?)



ant (allomone?)

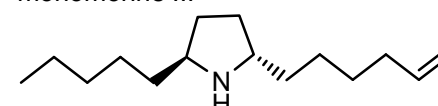


ant (allomone)

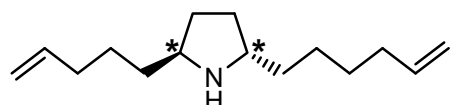


ant (allomone?)

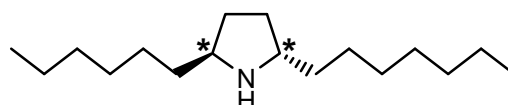
monomorine III



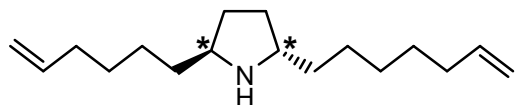
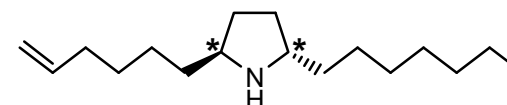
ant (trail phe.)



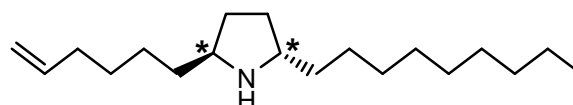
ant (allomone?)



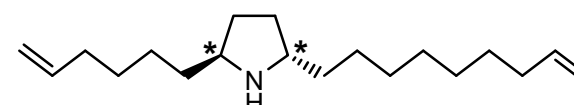
ant (allomone?)



ant (allomone?)

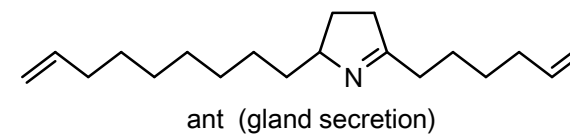
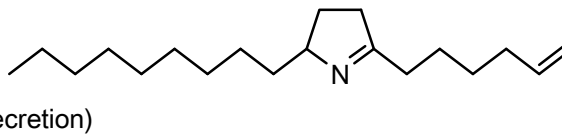
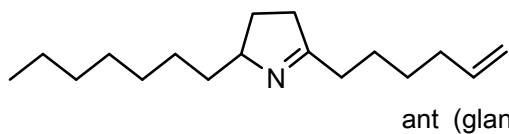
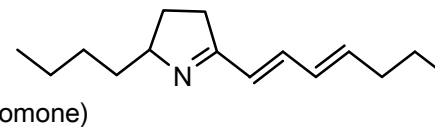
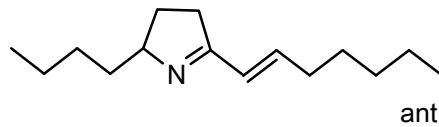
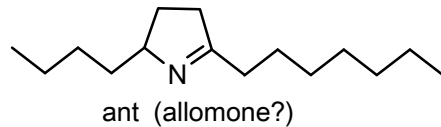
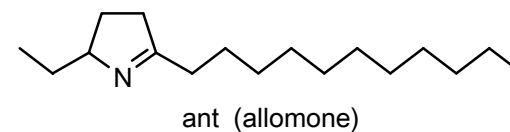
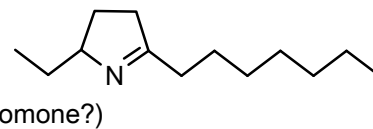
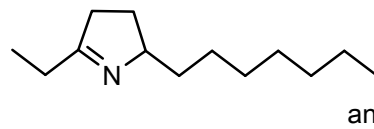
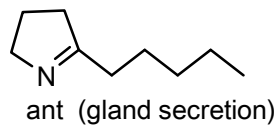
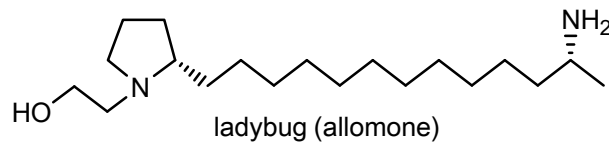
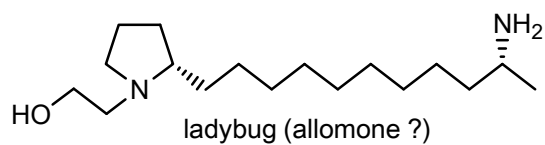
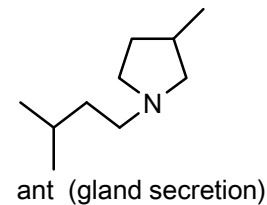
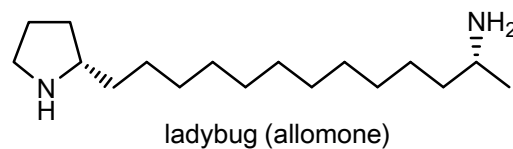
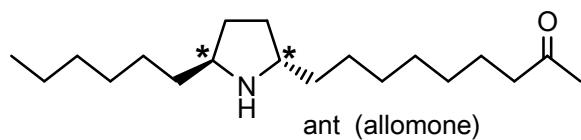


ant (allomone?)

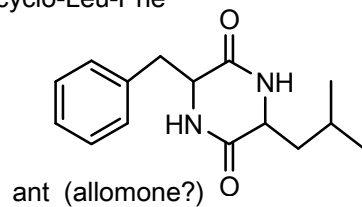


[C-2] Other: True alkaloids (v)

C4 ring

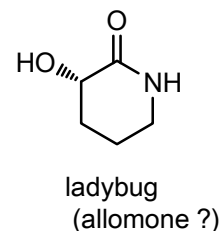
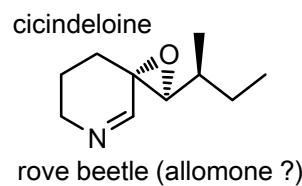
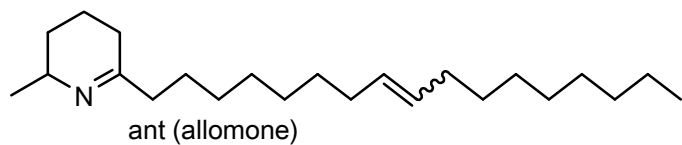
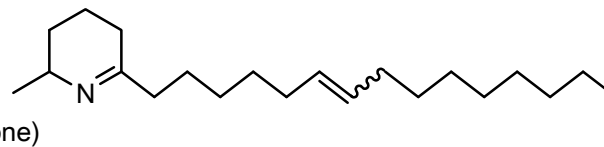
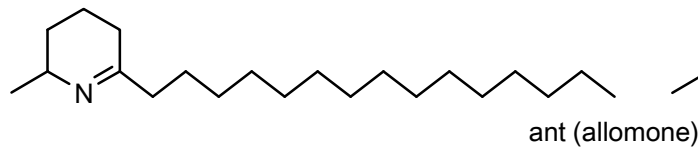
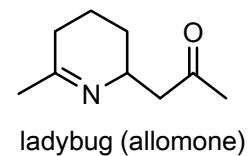
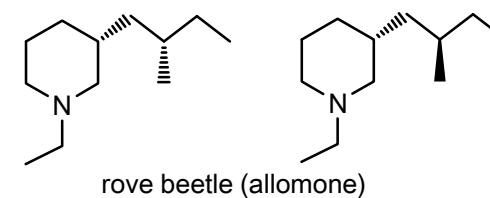
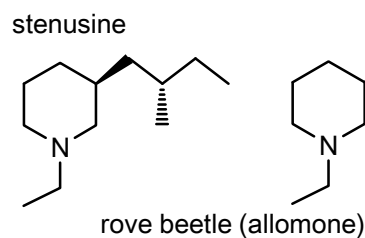
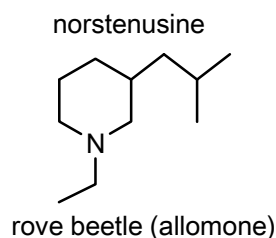
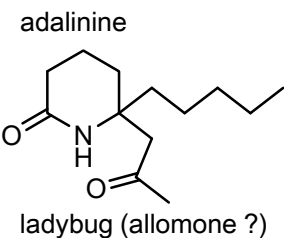
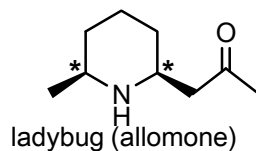
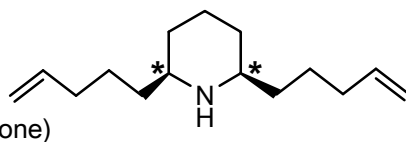
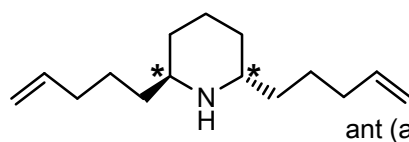
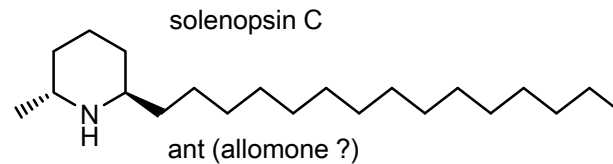
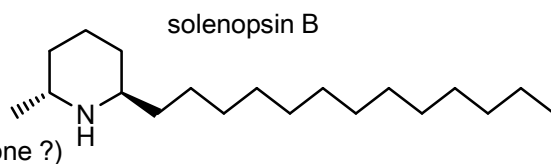
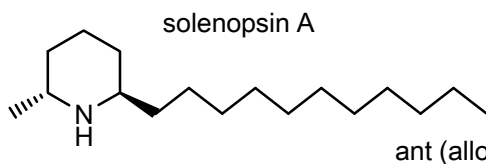
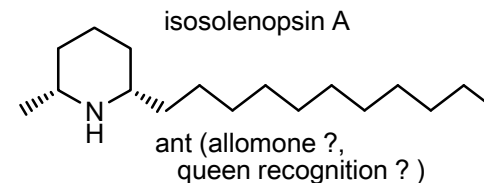
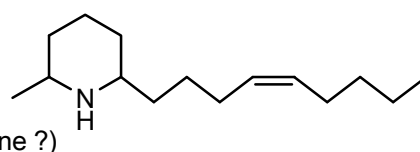
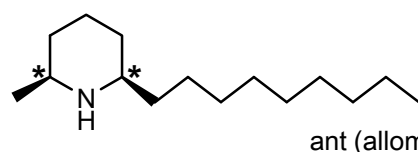
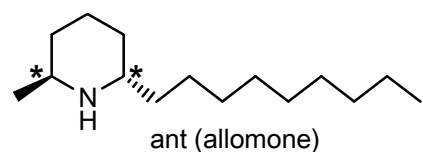


cyclo-Leu-Phe



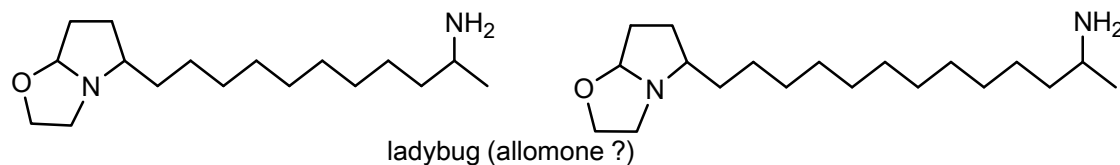
[C-2] Other: True alkaloids (vi)

C5 ring

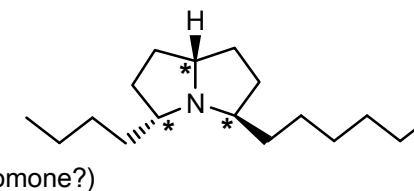
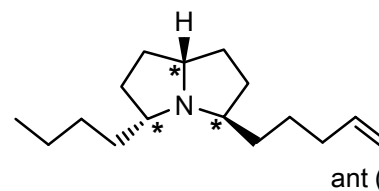
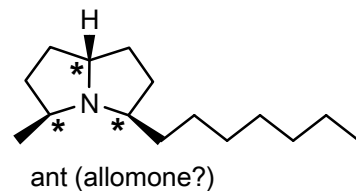
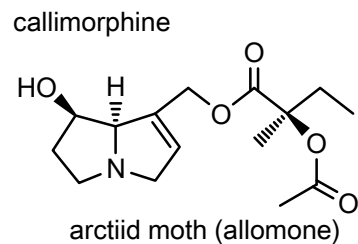
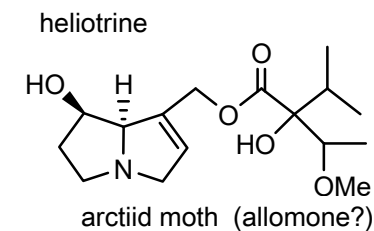
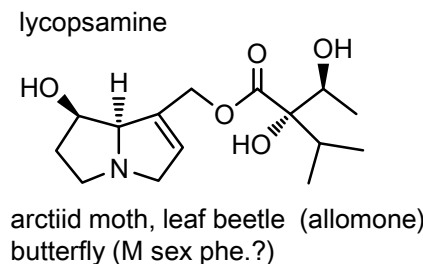
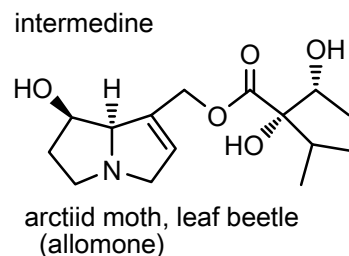
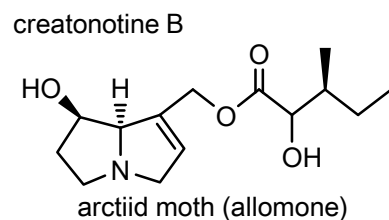
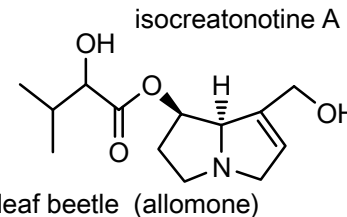
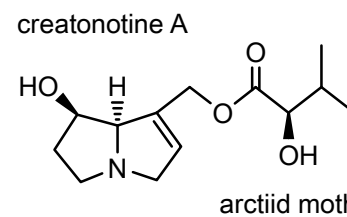
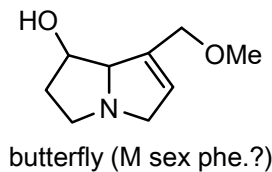
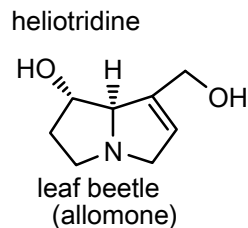
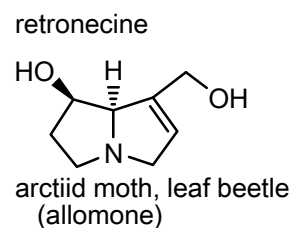
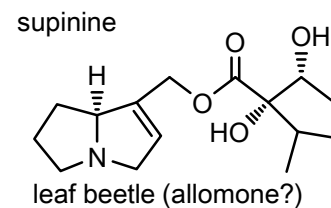
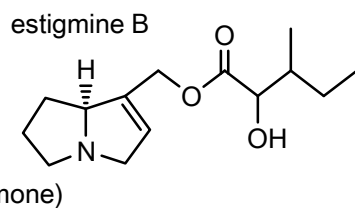
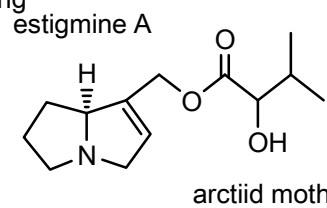


[C-2] Other: True alkaloids (vii)

C6 ring

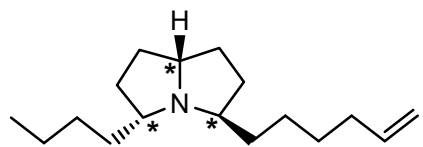


C7 ring



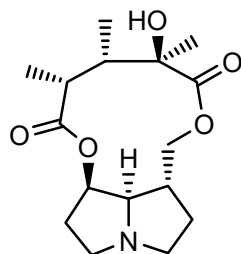
[C-2] Other: True alkaloids (viii)

C7 ring



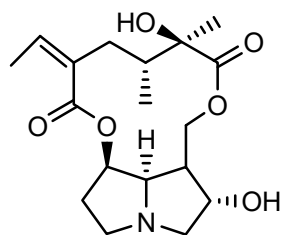
ant (allomone?)

retusine



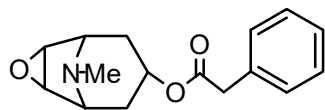
grasshopper
(allomone ?)

rosmarinine

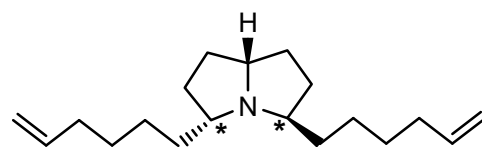


butterfly (allomone ?)

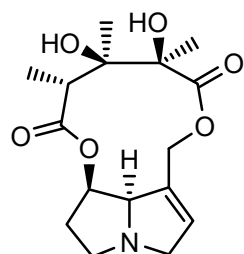
3-phenylacetoxy-
6,7-epoxytropane



treehopper (allomone ?)

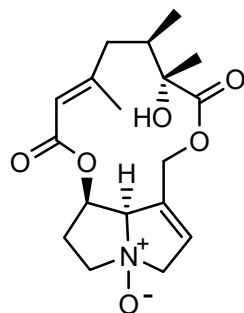


monocrotaline



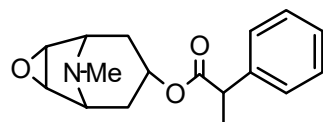
grasshopper, butterfly
(allomone ?)

doronene *N*-oxide

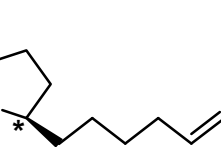


leaf beetle (allomone ?)

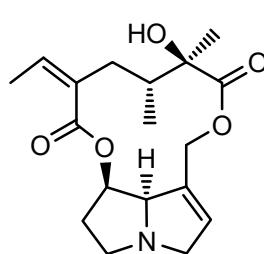
dihydroaposcopamine



butterfly (allomone)

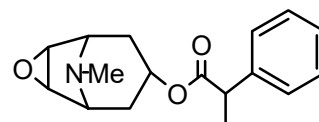


senecionine

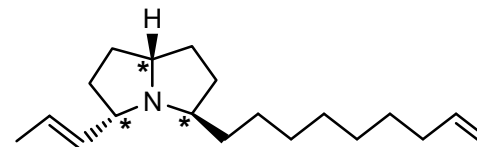


butterfly (allomone ?)

scopolamine

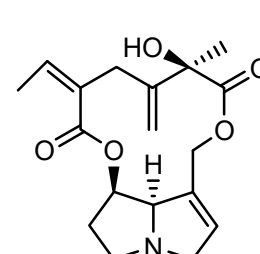


butterfly (allomone)
treehopper (allomone ?)

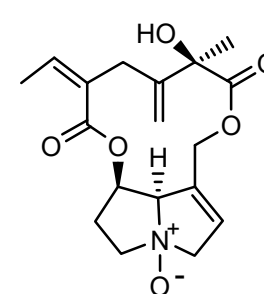


ant (allomone?)
arctiid moth (allomone)

seneciophylline



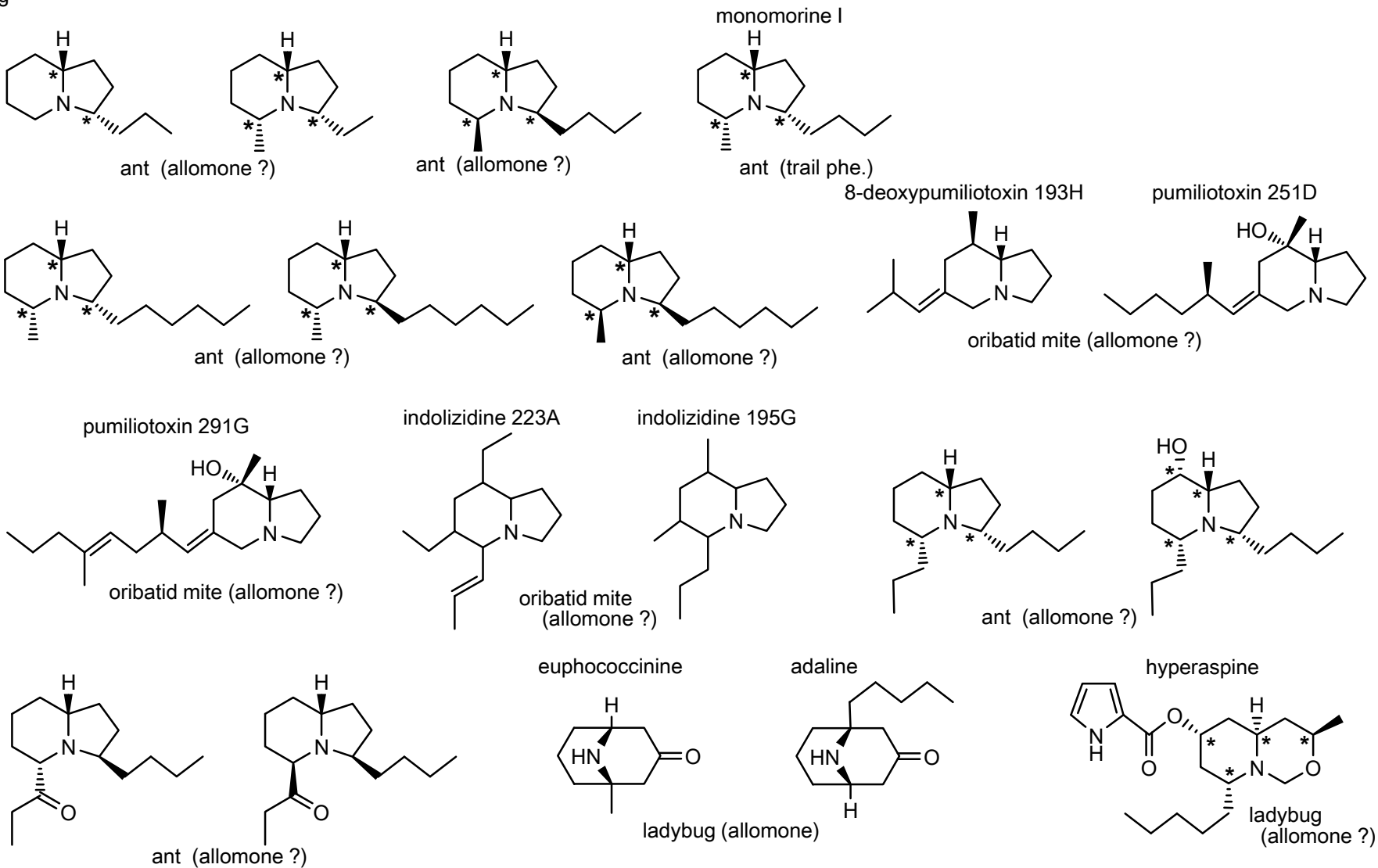
seneciophylline *N*-oxide



leaf beetle (allomone ?)

[C-2] Other: True alkaloids (ix)

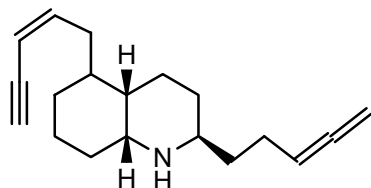
C8 ring



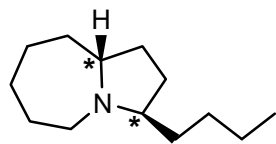
[C-2] Other: True alkaloids (x)

C9 ring

cis-269AB

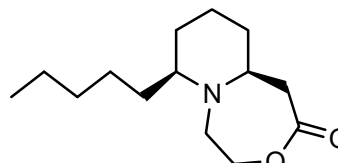


ant (allomone ?)



ant (allomone ?)

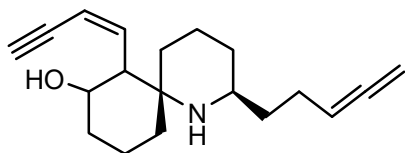
calvine



ladybug (allomone ?)

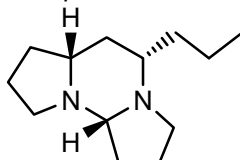
C10 ring

285A



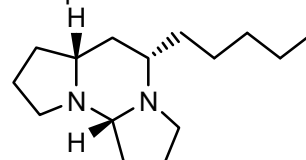
ant (allomone ?)

tetraponerine-2



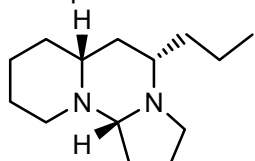
ant (allomone)

tetraponerine-6



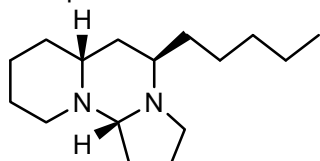
C11 ring

tetraponerine-4

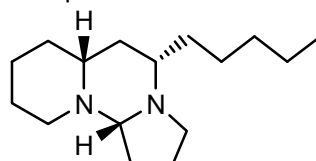


ant (allomone)

tetraponerine-7

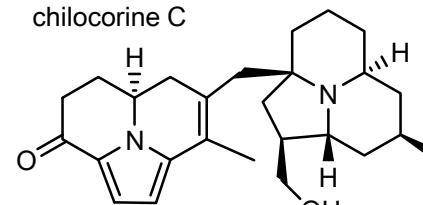


tetraponerine-8



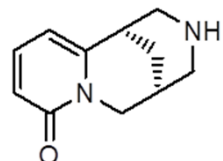
ant (allomone)

chilocorine C



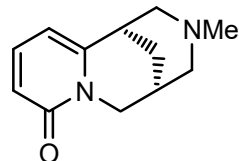
ladybug (allomone ?)

cytisine



aphid, pyralid moth (allomone)

N-methylcytisine

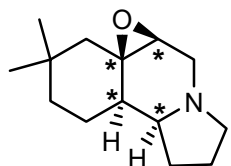


pyralid moth (allomone)

[C-2] Other: True alkaloids (xi)

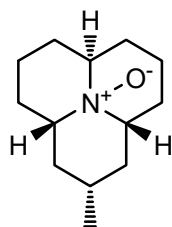
C12 ring

buzanamine



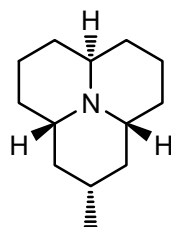
millipede (allomone)

coccinelline



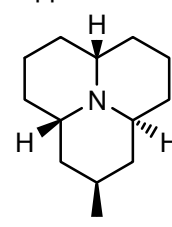
ladybug (allomone)

precoccinelline 193C



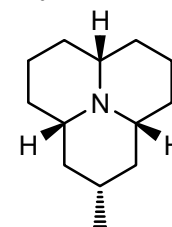
ladybug, soldier beetle, oribotriiid mite (allomone)

hippodamine



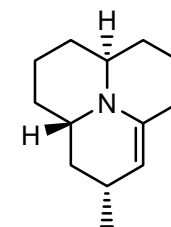
ladybug, soldier beetle, (allomone ?)

myrrhine



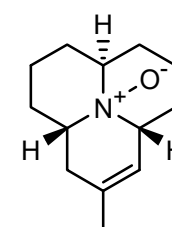
ladybug (allomone)

propyleine



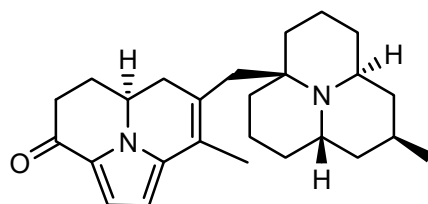
ladybug, soldier beetle, (allomone)

2-dehydrococcinelline



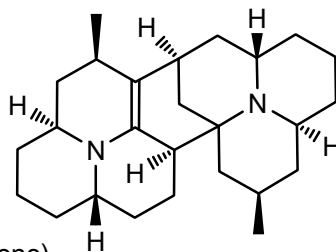
ladybug (allomone)

exochoimine

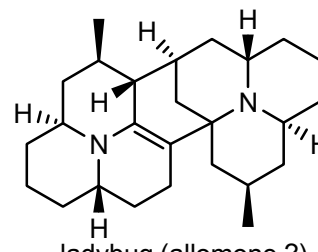


ladybug (allomone)

psylloborine A

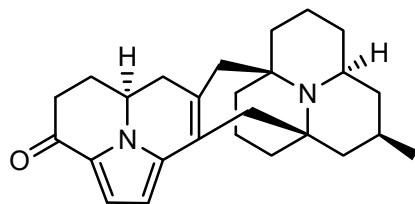


isopsylloborine A



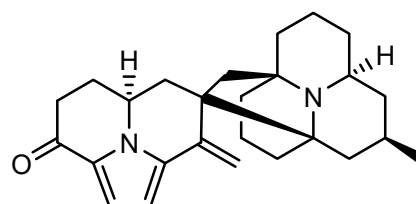
ladybug (allomone ?)

chilocorine A



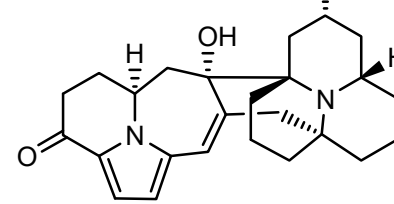
ladybug (allomone ?)

chilocorine B



ladybug (allomone)

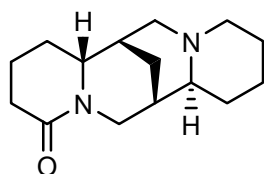
chilocorine D



ladybug (allomone ?)

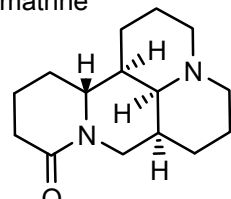
C15 ring

lupanine

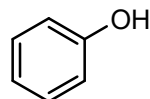


aphid (allomone ?)

matrine

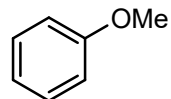


[C-3] Other: Aromatic comp. (i)



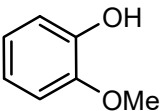
cockroach (allomone)
scarab beetle (F sex phe., allomone)
grasshopper (aggregation phe.)

anisole

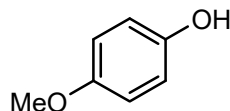


scarab beetle (F sex phe., aggregation phe.)

guaiacol

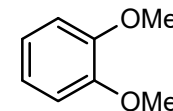


grasshopper (aggregation phe.)
scarab beetle (allomone)
cuckoo bee (marking phe.)
butterfly (gland secretion)

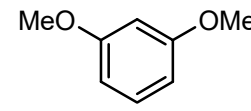


butterfly (allomone)

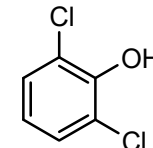
veratrole



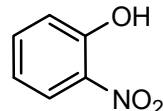
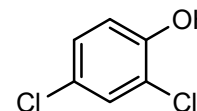
grasshopper (aggregation phe., oviposition phe.)



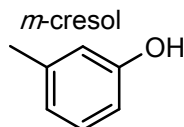
springtail (alarm phe.)



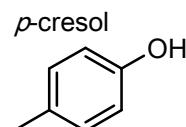
tick (F sex phe.)



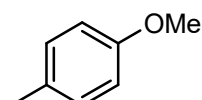
tick (aggregation phe.)



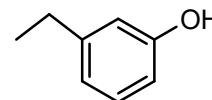
ground beetle (allomone)
darkling beetle (M sex phe.)



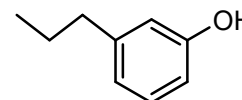
cockroach, millipede, caddis fly (allomone)
scarab beetle (F sex phe.), cuckoo bee (marking phe.)
butterfly (gland secretion)



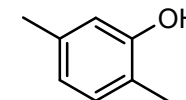
scarab beetle (aggregation phe.)



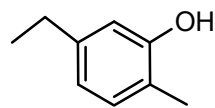
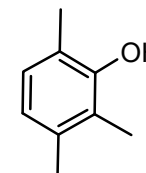
darkling beetle (M sex phe.)



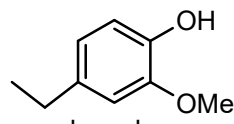
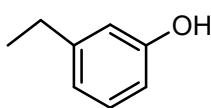
ant (allomone)



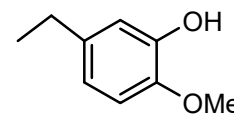
harvestman (allomone)



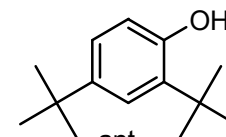
harvestman (allomone)



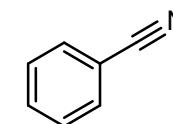
cockroach (M sex phe.)



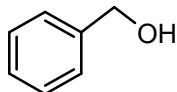
grasshopper (aggregation phe.)



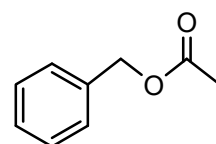
ant (gland secretion)



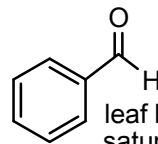
saturniid moth (larva allomone)



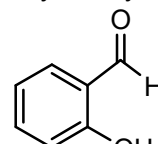
true bug (aggregation phe.), stink bug (M sex phe.)



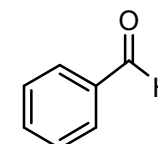
honey bee (alarm phe.)



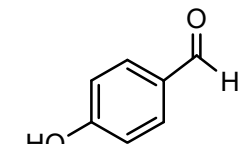
leaf beetle, tiger beetle, saturniid moth, millipede, sawfly (allomone), bee (alarm phe.)
grasshopper (M aggregation phe.)
assassin bug (M sex phe.)



cuckoo bee, leaf beetle, butterfly (allomone)

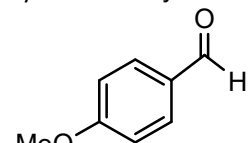


ant (gland secretion)



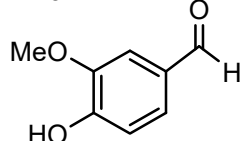
water bug (gland secretion)
water beetle (allomone ?)

p-anisaldehyde

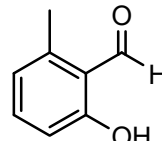


green lacewing (M aggregation phe.?)

vanillin



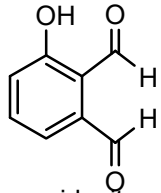
shield bug, pyralid moth, butterfly (M sex phe.)
cuckoo bee (marking phe.)



longhorn beetle (allomone ?)
acarid mite, dust mite (alarm phe., F sex phe.)
oribatid mite (alarm phe., allomone)

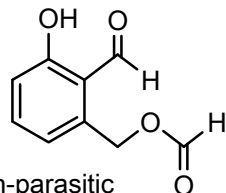
[C-3] Other: Aromatic comp. (ii)

γ-acaridial

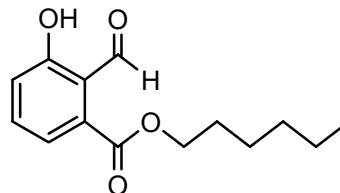


acarid mite, oribatid mite (F sex phe.)

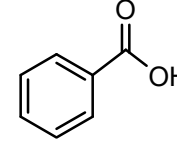
rhizoglyphinyl formate



non-parasitic mite, oribatid mite (gland secretion)

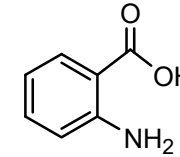


acarid mite (allomone ?)

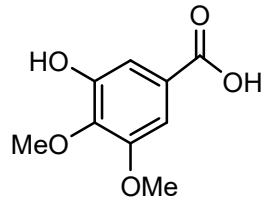


water beetle (allomone ?)

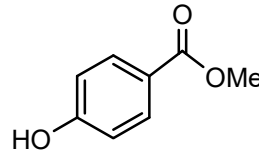
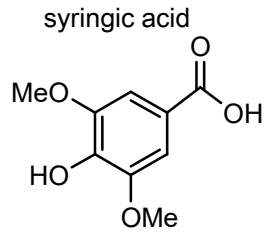
anthranilic acid



scarab beetle (F sex phe.)

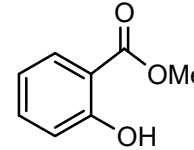


springtail (allomone)

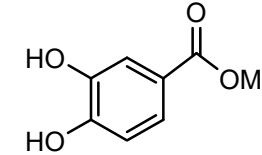


water bug (gland secretion)
water beetle (allomone ?)
bee (queen phe.)

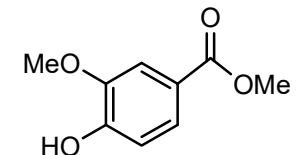
methyl salicylate



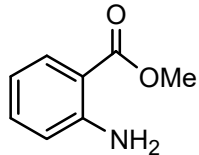
tick (aggregation phe.)
butterfly (allomone,
M anti-aphrodisiac phe.)
dung beetle (allomone)



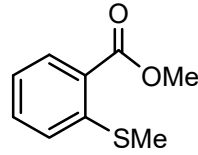
water beetle (allomone ?)



butterfly (M sex phe. ?)



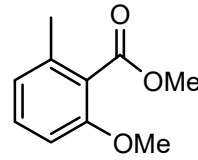
ant (alarm phe., trail phe.)



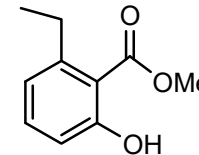
scarab beetle (F sex phe.)



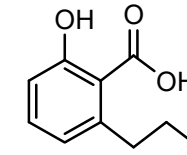
ant (primer phe., alarm phe., trail phe., queen sex phe., allomone)
parasitoid wasp (F sex phe.)
ground beetle, darkling beetle (allomone)



ant (trail phe.)

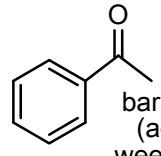


darkling beetle (allomone)

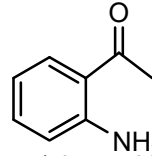


ant (allomone)

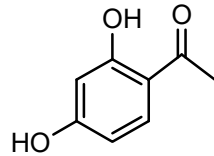
acetophenone



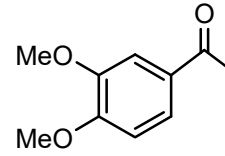
bark beetle (aggregation phe.)
weevil (making phe.)
grasshopper (oviposition phe.)
caddisfly, spider (allomone)



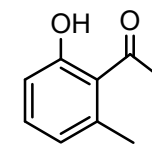
ant (alarm phe.)
webspinning sawfly (F sex phe.)



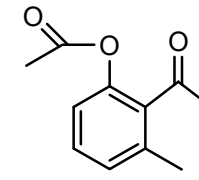
butterfly (M sex phe. ?)



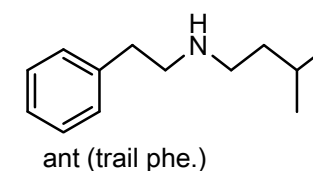
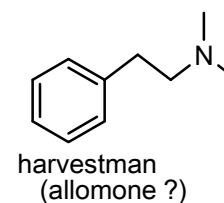
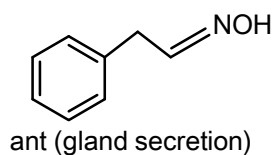
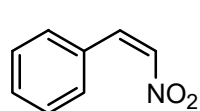
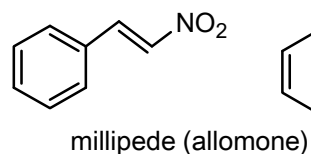
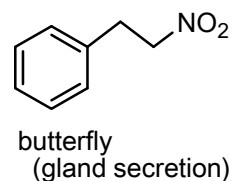
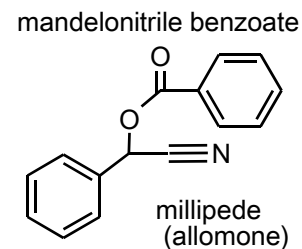
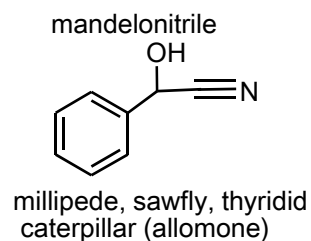
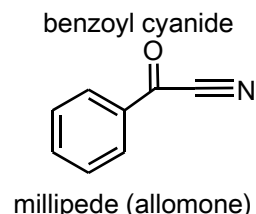
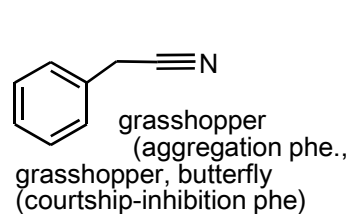
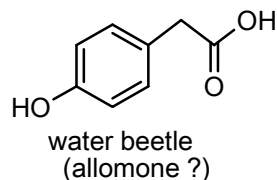
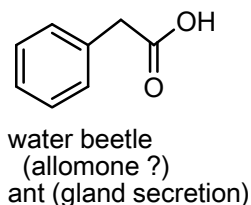
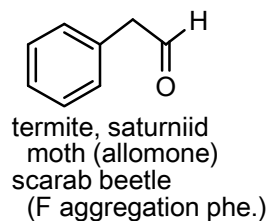
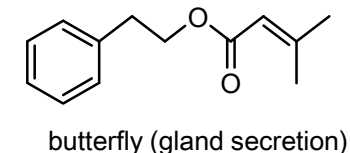
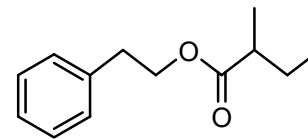
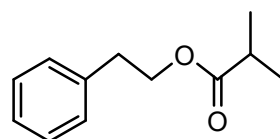
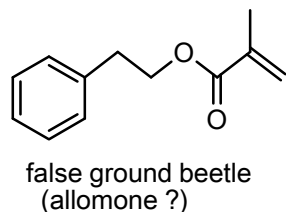
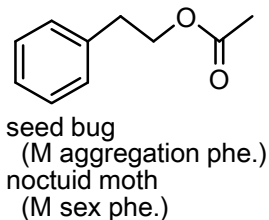
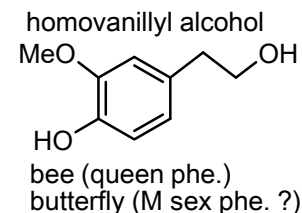
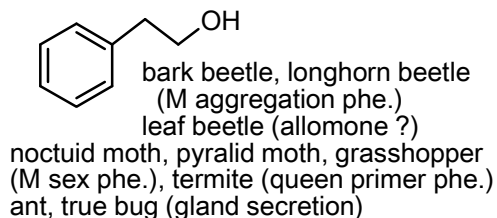
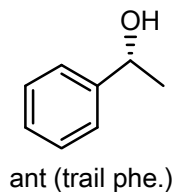
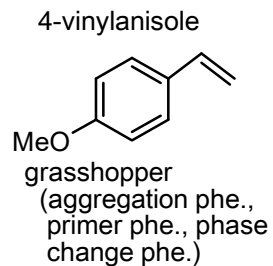
ant (allomone ?)



ant (gland secretion)
flower wasp (F sex phe. ?)

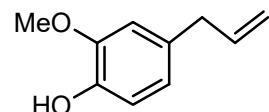


[C-3] Other: Aromatic comp. (iii)



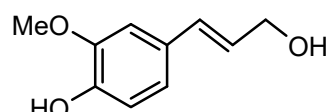
[C-3] Other: Aromatic comp. (iv)

eugenol

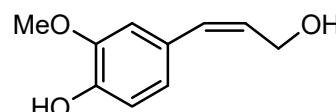


fairy wasp (F sex phe.)

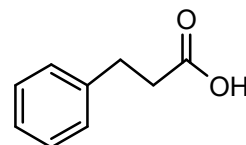
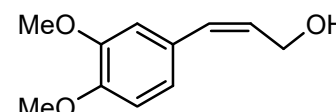
coniferyl alcohol



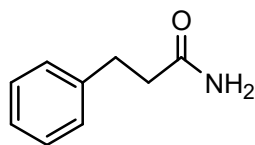
bee (queen phe.)
fruit fly (M sex phe.,
M allomone)



fruit fly (M sex phe.)

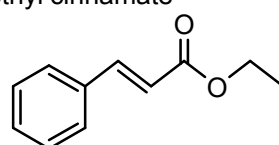


wasp (trail phe. ?)
stingless bee
(gland secretion)

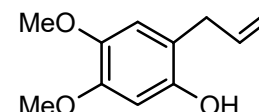


net-winged beetle
(allomone ?)

ethyl cinnamate

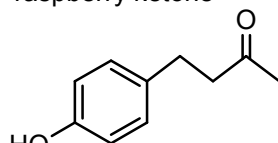


tortricid moth (M sex phe.)



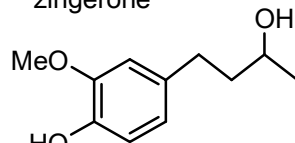
fruit fly (M sex phe.,
allomone)

raspberry ketone



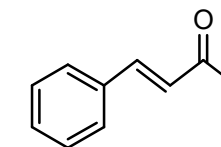
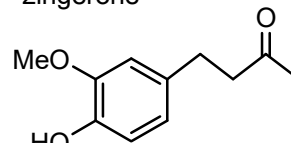
fruit fly (M sex phe.)

zingerone

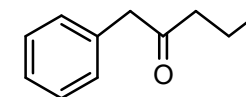


fruit fly (M sex phe.)

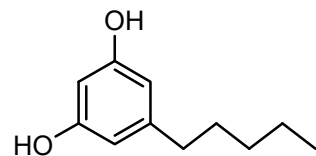
zingerone



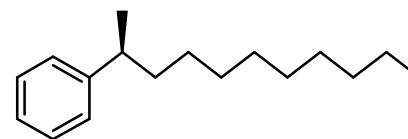
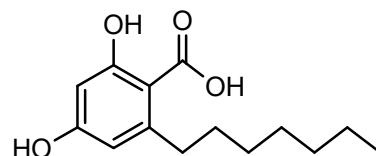
ant (alarm phe. ?)



millipede (allomone)

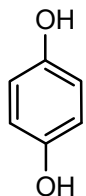


ant (allomone)

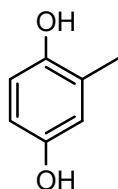


termite (aggregation phe.)

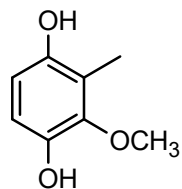
[C-3] Other: Aromatic comp. (v)



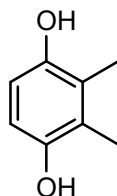
grasshopper, ground beetle (allomone)
scarab beetle (F sex phe.), termite (phago-stimulating phe.)
water beetle (gland secretion)



millipede, ground beetle, rove beetle (allomone)

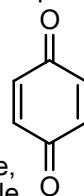


millipede (allomone)

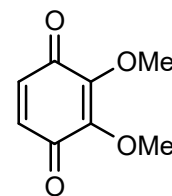


harvestman (allomone)

benzoquinone

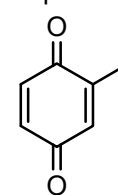


ground beetle, darkling beetle, harvestman, cockroach (allomone)
cockroach (alarm phe.)
scarab beetle (F sex phe.)

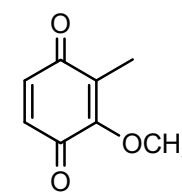


millipede (allomone)

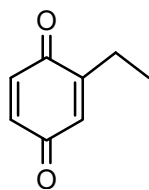
toluquinone



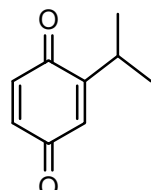
ground beetle, darkling beetle, rove beetle, earwig millipede (allomone)



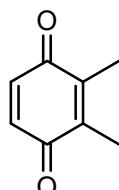
millipede, darkling beetle, rove beetle (allomone)



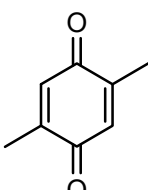
ground beetle, millipede (allomone)
darkling beetle (M sex phe.)



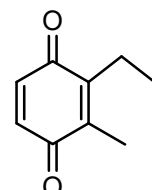
darkling beetle (allomone)



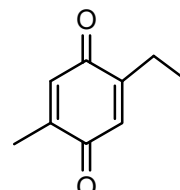
ground beetle, darkling beetle, cockroach, harvestman, earwig (allomone)



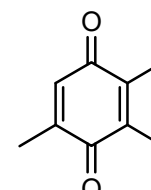
cockroach (allomone, alarm phe.)



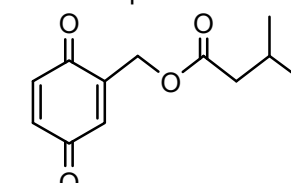
harvestman (allomone)



harvestman (allomone)

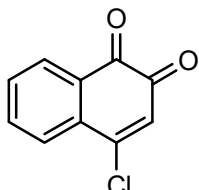


blattellaquinone

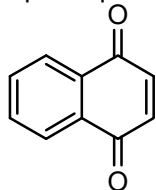


cockroach (F sex phe.)

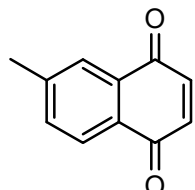
naphthoquinone



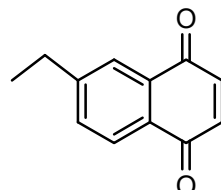
harvestman (allomone ?)



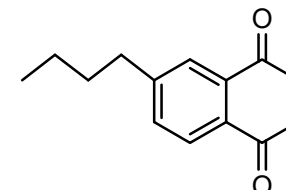
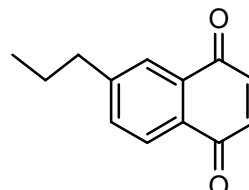
firefly, harvestman (allomone)



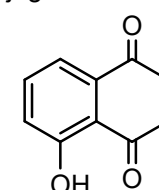
harvestman, darkling beetle, (allomone)



darkling beetle (allomone)

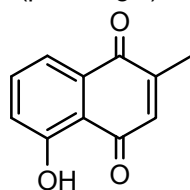


juglone



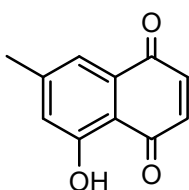
leaf beetle, thrips (allomone)

2-methyljuglone (plumbagin)

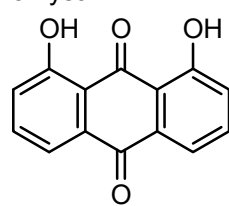


thrips (allomone)
mite (gland secretion)

7-methyljuglone

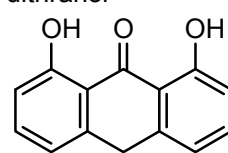


chryszazin

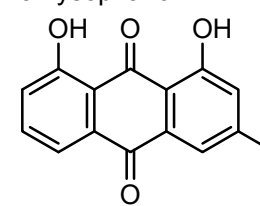


leaf beetle (allomone)

dithranol

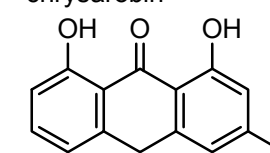


chrysophanol

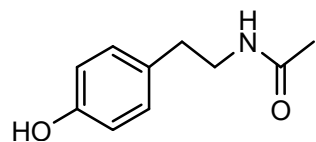


leaf beetle, aphid (allomone)

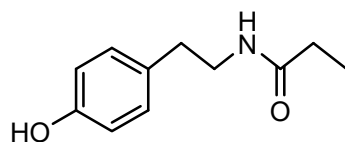
chrysarobin



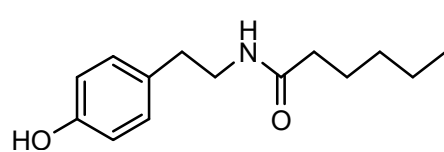
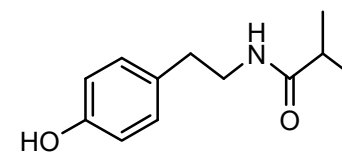
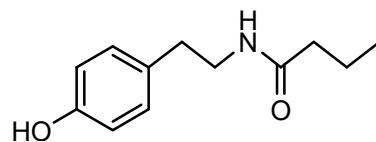
[C-3] Other: Aromatic comp. (vi)



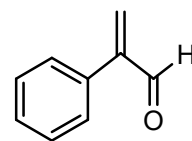
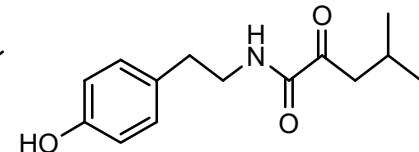
ant (M sex phe. ?)



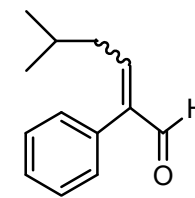
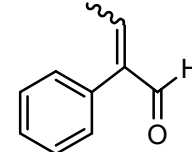
ant (M sex phe. ?)



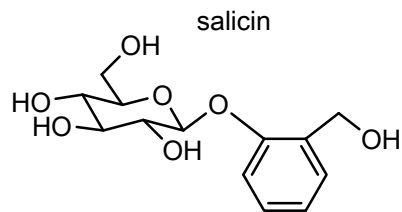
ant (M sex phe. ?)



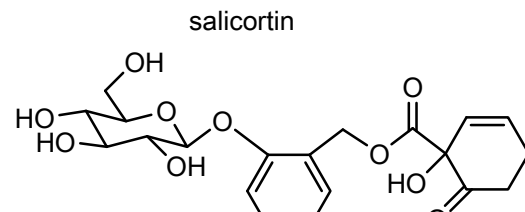
ant (gland secretion)



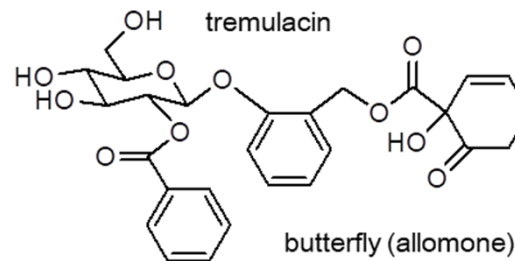
cave cricket (M gland secretion)



salicin



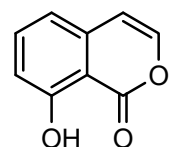
salicortin



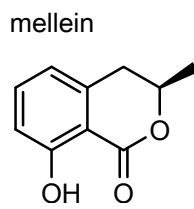
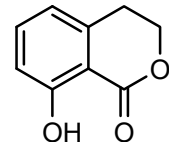
tremulacin

butterfly (allomone)

butterfly (allomone)

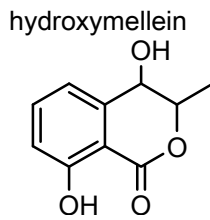


darkling beetle (allomone)



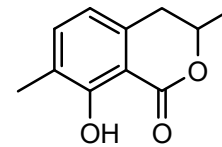
mellein

ant (M sex phe. ?, trail phe. allomone, gland secretion) termite, thrips (allomone) moth (M sex phe.)

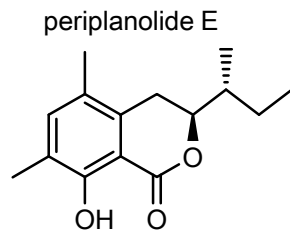
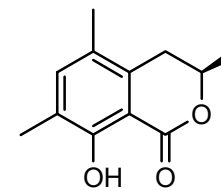


hydroxymellein

ant (gland secretion)



ant (trail phe.)

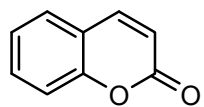


periplanotide E

cockroach (aggregation phe.)

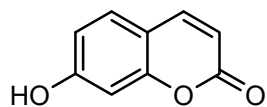
[C-3] Other: Aromatic comp. (vii)

coumarin

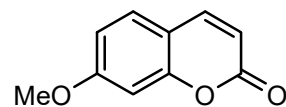


ermine moth (allomone ?)

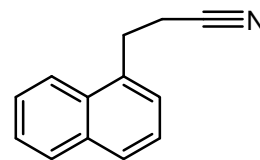
umbelliferone



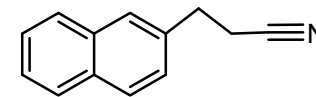
herniarin



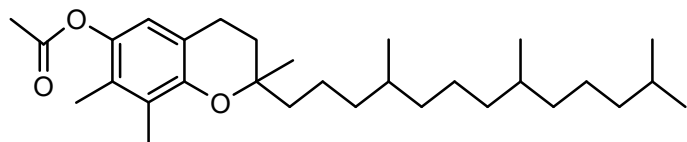
ermine moth (allomone ?)



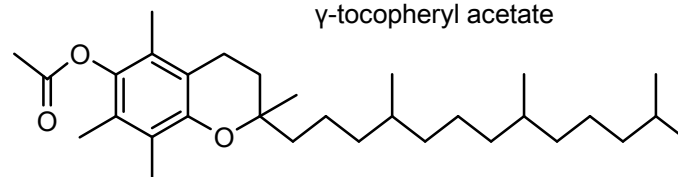
grasshopper (M sex phe. ?)



α -tocopheryl acetate

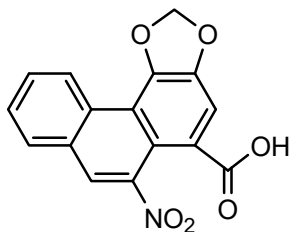


γ -tocopheryl acetate



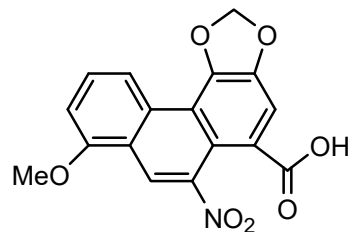
ladybug (allomone ?)

aristolochic acid II



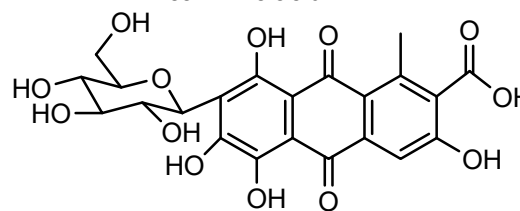
butterfly (allomone)

aristolochic acid I



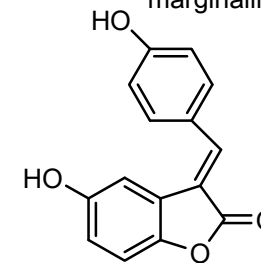
butterfly, pyralid moth
(allomone)

carminic acid



pyralid moth, ladybug, chamaemyiid fly
(larva allomone)

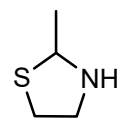
marginalin



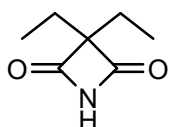
ground beetle
(allomone)

[C-4] Other: Ring comp. (i)

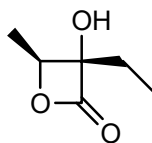
C3 ring



cockroach
(M sex phe.)

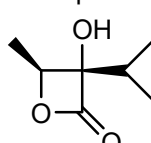


scarab beetle
(F sex phe.?)

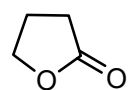


butterfly (M sex phe.)

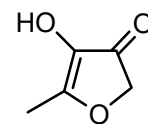
viridifloric β -lactone



C4 ring

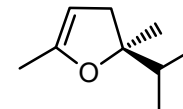
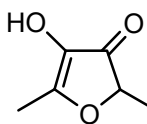


burrowing bug
(gland secretion)



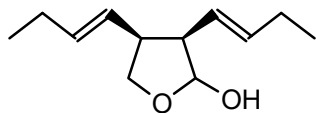
cockroach (M sex phe.)

furaneol

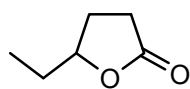


ship-timber beetle
(F sex phe. ?)

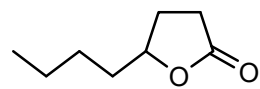
biprorulure



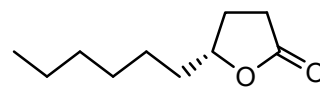
stink bug (M sex phe.)



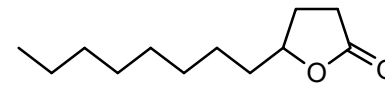
hide beetle
(F sex phe.)



parasitoid wasp, honey
bee (gland secretion)

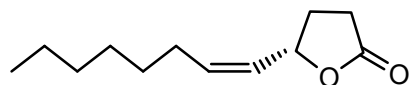


scarab beetle (M sex phe.)
thrips (allomone)
butterfly (M scent secretion)



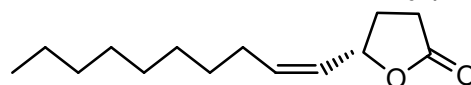
rove beetle (allomone ?)
parasitoid wasp (gland secretion)

buibuilactone

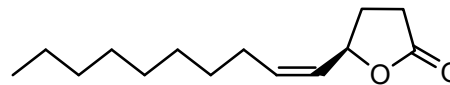


scarab beetle (F sex phe.)

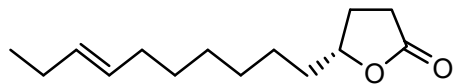
japonilure



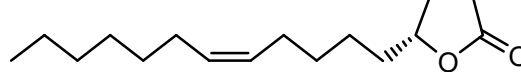
scarab beetle (F sex phe.)



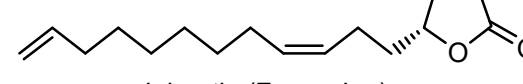
desmolactone



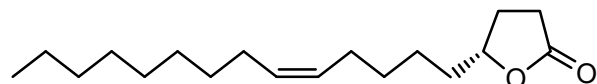
parasitoid wasp (M aggregation phe.)



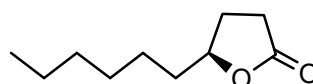
longhorn beetle (F sex phe.)



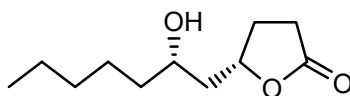
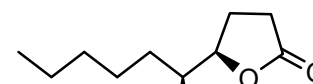
scarab beetle (F sex phe.)



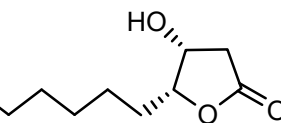
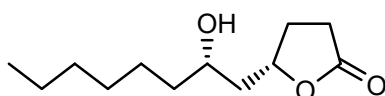
ant (secretion), stem sawfly (F sex phe.)



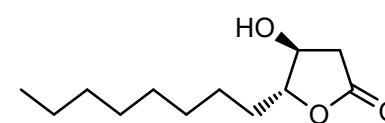
parasitoid wasp (M sex phe.)



butterfly (M sex phe.)



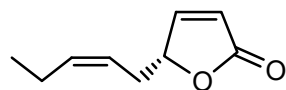
fruit fly (M sex phe.?)



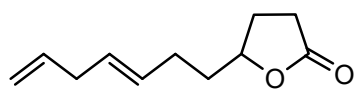
harvestman (allomone)

[C-4] Other: Ring comp. (ii)

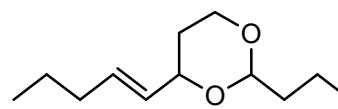
C4 ring



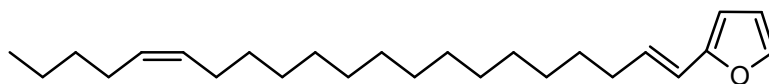
pyralid moth (M sex phe.)



fruit fly (gland secretion)



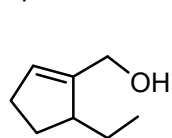
cockroach (allomone ?)



ant (allomone ?)

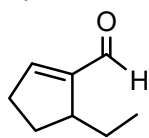
C5 ring

phoracanthol

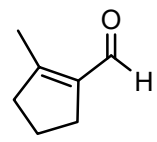


longhorn beetle (allomone?)

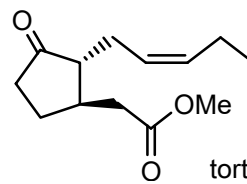
phoracanthal



ant (gland secretion)

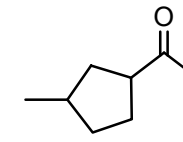
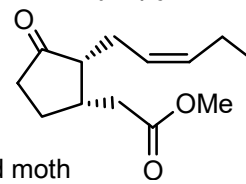


methyl jasmonate



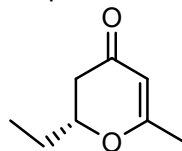
tortricid moth (M sex phe.)

methyl epijasmonate

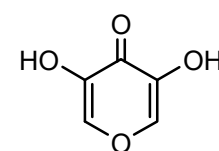
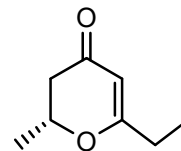


stick insect (allomone ?)

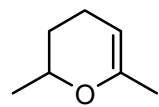
hepialone



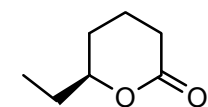
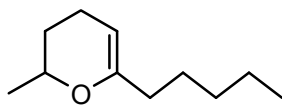
swift moth (M sex phe.)



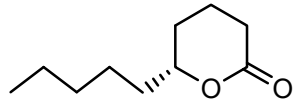
shield bug (M sex phe.)



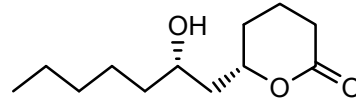
bee (cephalic secretion)



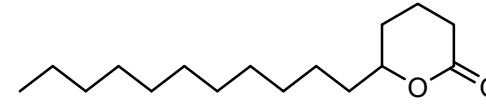
fruit fly (M sex phe.)



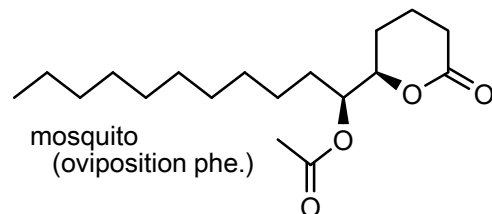
butterfly (M sex phe. ?)



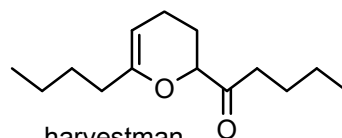
butterfly (M sex phe.)



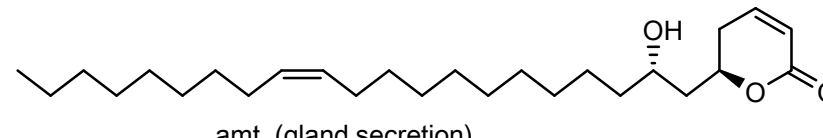
wasp (queen primer phe.)



mosquito (oviposition phe.)



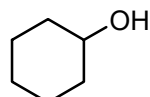
harvestman (allomone ?)



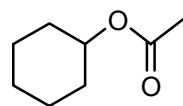
ant (gland secretion)

[C-4] Other: Ring comp. (iii)

C6 ring

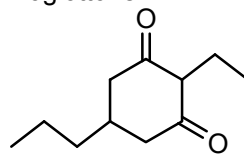


grasshopper
(aggregation phe.)

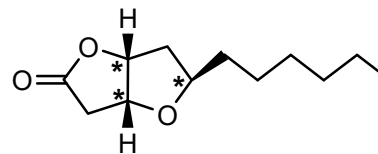


butterfly (F sex phe. ?)

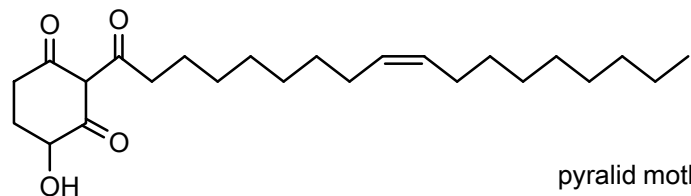
chiloglottone



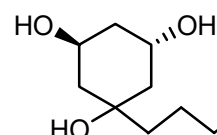
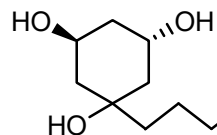
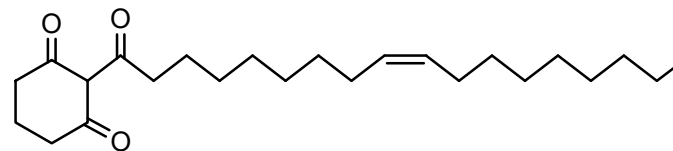
solitary wasp (F sex phe.)



parasitoid wasp (gland secretion)



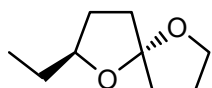
pyralid moth (larva trail phe.)



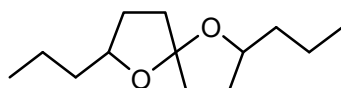
ant (gland secretion)

C7 ring

chalcogran



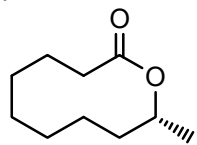
bark beetle
(aggregation phe.)



mining bee
(gland secretion)

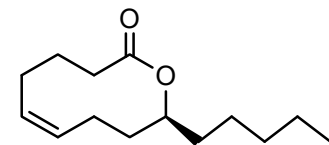
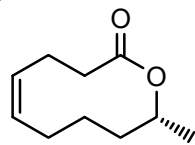
C9 ring

phoracantholide I



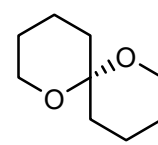
longhorn beetle (allomone ?)

phoracantholide J

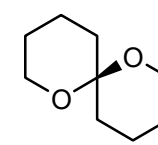
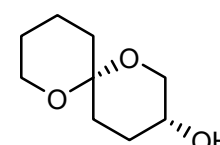


termite (queen recognition ?)

olean



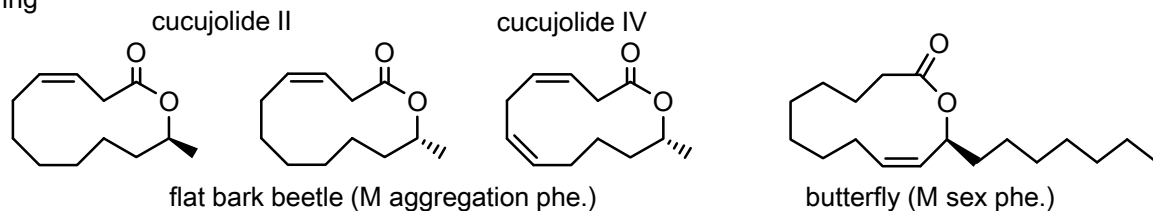
fruit fly (F sex phe.)



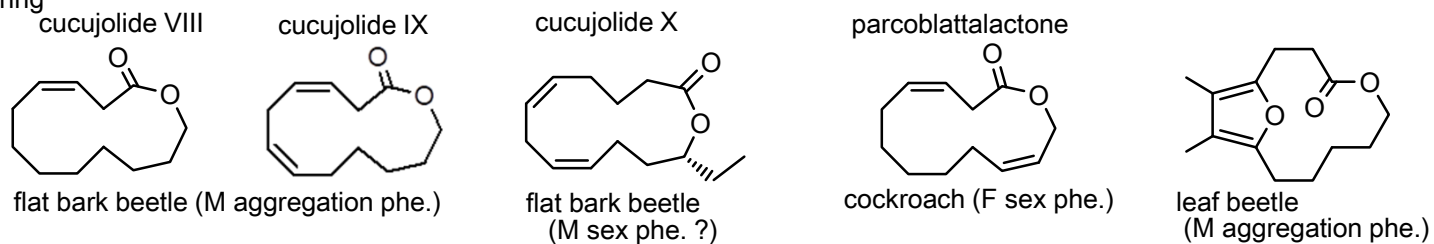
fruit fly
(F sex phe.)

[C-4] Other: Ring comp. (iv)

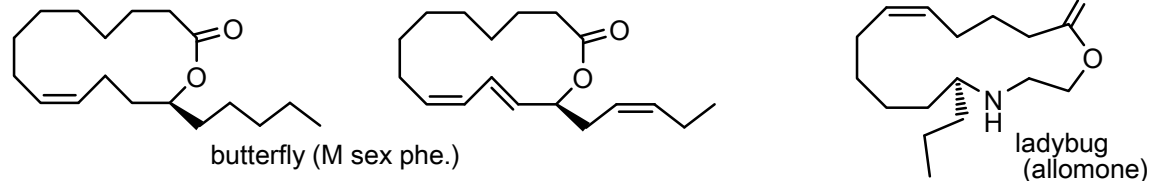
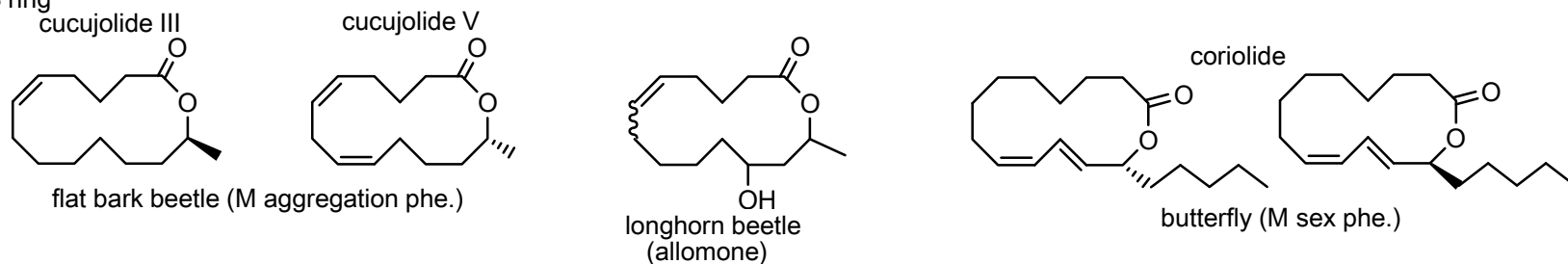
C11 ring



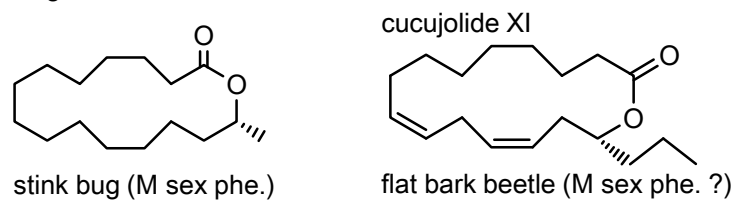
C12 ring



C13 ring

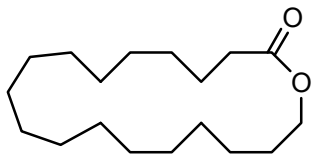


C15 ring

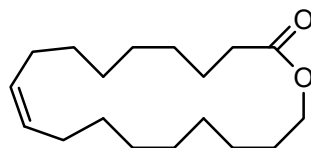


[C-4] Other: Ring comp. (v)

C18 ring

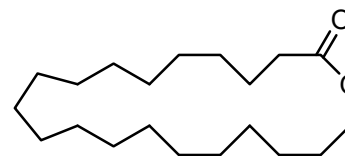


sweat bee (gland secretion,
F sex phe., queen phe.)



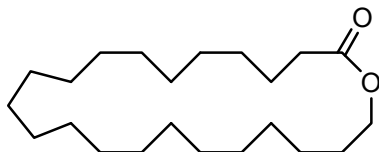
wasp (trail phe. ?)

C20 ring

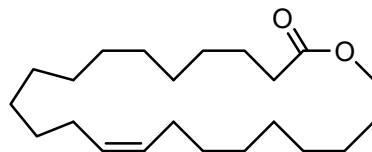


sweat bee (gland secretion,
F sex phe., queen phe.)
mining bee, plasterer bee
(gland secretion)

C22 ring

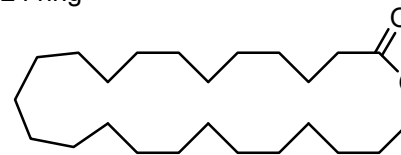


sweat bee (gland secretion,
F sex phe., queen phe.)
plasterer bee (gland secretion)

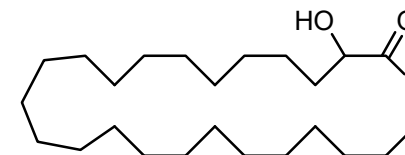


sweat bee (gland secretion)

C24 ring

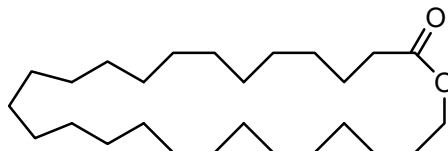


sweat bee (gland secretion,
F sex phe.)
plasterer bee (gland secretion)
termite (allomone ?)

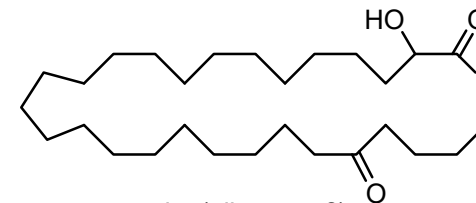
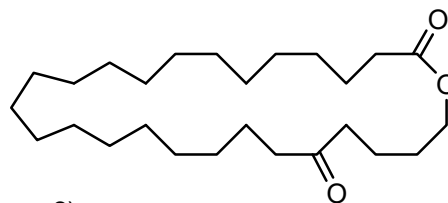


termite (allomone ?)

C26 ring

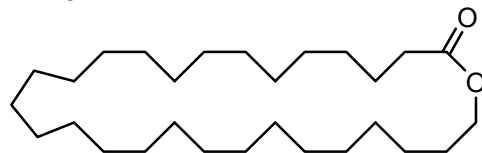


termite (allomone ?)



termite (allomone ?)

C28 ring



termite (allomone ?)

